



DRUM

14.5594.50

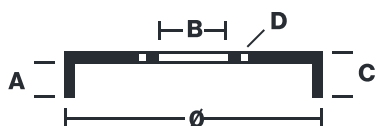
The 14.5594.50 drum is synonymous with reliability

Brembo has developed several design solutions for drum brakes which combine multiple materials to reduce the overall weight. The most popular range of lamellar graphite cast iron drums is supplemented by cast iron drums with a steel sprocket flange and aluminium drums, whereby only the inner part of the drum on which the shoes operate are made of lamellar cast iron, namely the brake band. Additionally drums with built-in bearing kit and hub are added to this range.

- ✓ OE-equivalent
- ✓ Brembo quality
- ✓ Safety
- ✓ Durability
- ✓ Bearing kit



Technical specifications



EAN code
8020584559451

Axle
Rear

Diameter
165 mm

Width
38,5 mm

Height
58

Number of holes
3

Centering
56 mm

Max diameter
166 mm

Bearing kit

		14.5594.50	
AP	55249		
BRECO	BK 5594		
DIMENSION	165.1 x 37.7 mm		
MAX DIA	166 mm		
BALANCING	GUARANTEED		
MATERIAL	SUB-GROUP 1		
WEIGHT	3.9 kg		
E11	90R 02D01202/59681		
DATE : 25/11/2021 VERSION : 00			

COMPATIBLE VEHICLES