



DRUM

14.5111.10

The 14.5111.10 drum is synonymous with reliability

Brembo has developed several design solutions for drum brakes which combine multiple materials to reduce the overall weight. The most popular range of lamellar graphite cast iron drums is supplemented by cast iron drums with a steel sprocket flange and aluminium drums, whereby only the inner part of the drum on which the shoes operate are made of lamellar cast iron, namely the brake band. Additionally drums with built-in bearing kit and hub are added to this range.

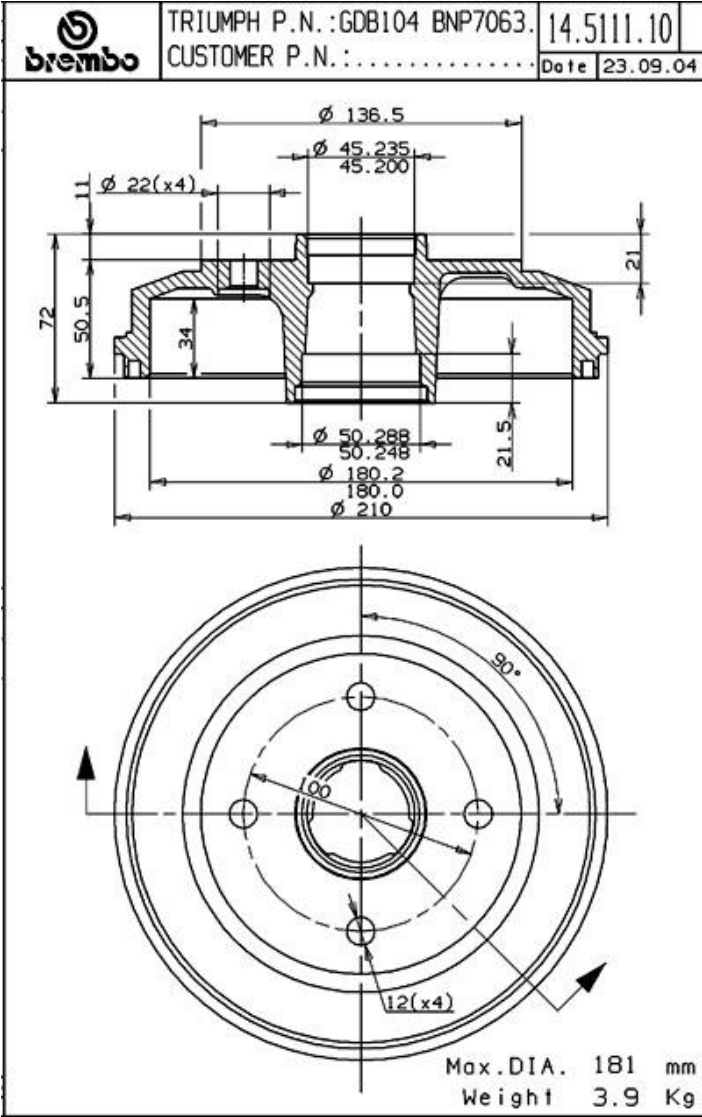
- ✓ OE-equivalent
- ✓ Brembo quality
- ✓ Safety
- ✓ Durability



Technical specifications



EAN code	Diameter	
8020584511114	180 mm	
Width	Height	Number of holes
34 mm	72	4
Centering	Max diameter	
45,2 mm	181 mm	



COMPATIBLE OE PART NUMBERS

BNP7063	TRIUMPH
GDB104	TRIUMPH