



DRUM

14.5815.10

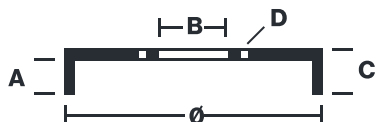
The 14.5815.10 drum is synonymous with reliability

Brembo has developed several design solutions for drum brakes which combine multiple materials to reduce the overall weight. The most popular range of lamellar graphite cast iron drums is supplemented by cast iron drums with a steel sprocket flange and aluminium drums, whereby only the inner part of the drum on which the shoes operate are made of lamellar cast iron, namely the brake band. Additionally drums with built-in bearing kit and hub are added to this range.

- ✓ OE-equivalent
- ✓ Brembo quality
- ✓ Safety
- ✓ Durability



Technical specifications



EAN code
8020584581513

Axle
Rear

Diameter
200 mm

Width
55 mm

Height
65,5

Number of holes
4

Centering
55 mm

Max diameter
201 mm

		14.5815.10	
AP	55167		
BRECO	BT 5815		
DIMENSION	200.1 x 55 mm		
MAX DIA	201 mm		
BALANCING	GUARANTEED		
MATERIAL	SUB-GROUP 1		
WEIGHT	3.8 kg		
	90R		
	02D01202/59686		

DATE : 10/11/2021 VERSION : 00

COMPATIBLE VEHICLES

COMPATIBLE OE PART NUMBERS

94852720	CHEVROLET
----------	-----------

4243102020	TOYOTA
------------	--------

4243112130	TOYOTA
------------	--------

4243112140	TOYOTA
------------	--------

4243112180	TOYOTA
------------	--------

4243120250	TOYOTA
------------	--------
