



# DRUM

## 14.A683.10

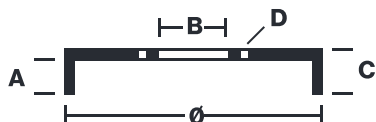
The 14.A683.10 drum is synonymous with reliability

Brembo has developed several design solutions for drum brakes which combine multiple materials to reduce the overall weight. The most popular range of lamellar graphite cast iron drums is supplemented by cast iron drums with a steel sprocket flange and aluminium drums, whereby only the inner part of the drum on which the shoes operate are made of lamellar cast iron, namely the brake band. Additionally drums with built-in bearing kit and hub are added to this range.

- ✓ OE-equivalent
- ✓ Brembo quality
- ✓ Safety
- ✓ Durability



### Technical specifications



EAN code <b>8020584017654</b>	Axle <b>Rear</b>	Diameter <b>203 mm</b>
Width <b>38,5 mm</b>	Height <b>59,3</b>	Number of holes <b>3</b>
Centering <b>58 mm</b>	Max diameter <b>204,5 mm</b>	

		<b>14.A683.10</b>	
AP	55318		
BRECO	BT 1683		
DIMENSION	203.3 x 38.5 mm		
MAX DIA	204.5 mm		
BALANCING	GUARANTEED		
MATERIAL	SUB-GROUP 1		
WEIGHT	3.2 kg		
	90R		
	02D01202/59684		
<small>DATE : 06/07/2021 VERSION : 00</small>			

**COMPATIBLE VEHICLES**

## COMPATIBLE OE PART NUMBERS

0004329V001	SMART
-------------	-------

---

0004329V001000000	SMART
-------------------	-------

---

0004329V003	SMART
-------------	-------

---

0004329V004	SMART
-------------	-------

---

4514230001	SMART
------------	-------

---