

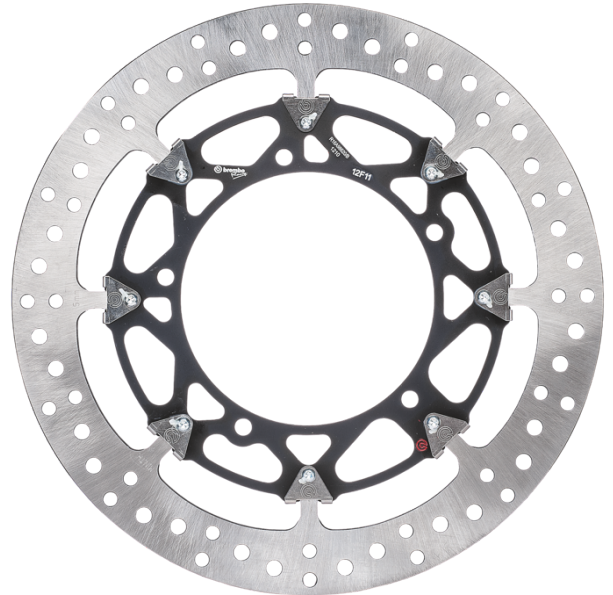


T-DRIVE 208C89011

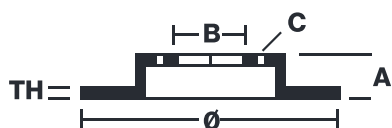
The 208C89011 brake disc is synonymous with reliability

The T-drive disc, born from the experience gained in the top racing categories, is the latest evolution of Brembo racing discs. The special "T"-shape of the pins is the innovative element that strongly differentiates the T-drive from discs with drive pawls. This unique conformation transmits more braking torque, ensuring better resistance to thermal-mechanical stress, especially under extreme conditions of use, such as racing.

- ✓ OE-equivalent
- ✓ Brembo quality
- ✓ TUV approved
- ✓ Safety
- ✓ Performance
- ✓ Exclusive style
- ✓ Racing inspired
- ✓ Sports driving



Technical specifications



Diameter Ø
330 mm

Thickness (TH)
mm

Number of holes

Hole diameter
mm

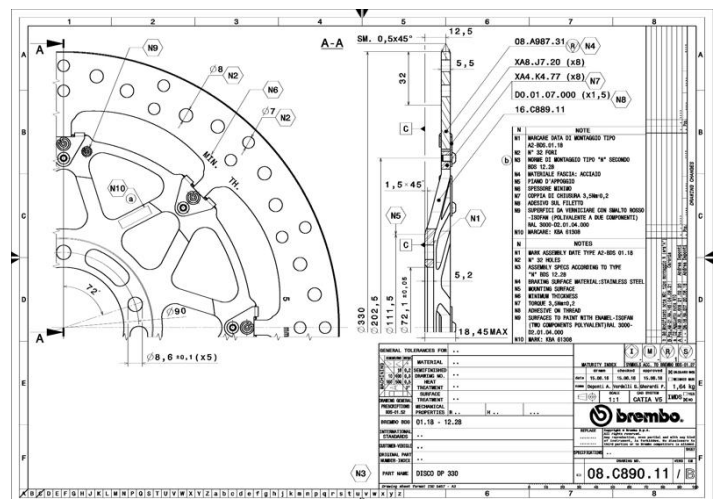
Centering (B)
mm

Brake disc type
Floating

Surface width
32

Holes fixing (C)
mm

Units per box
0



COMPATIBLE VEHICLES