



# DRUM

## 14.C016.10

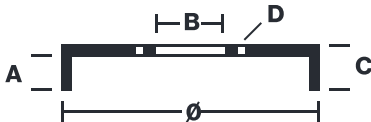
The 14.C016.10 drum is synonymous with reliability

Brembo has developed several design solutions for drum brakes which combine multiple materials to reduce the overall weight. The most popular range of lamellar graphite cast iron drums is supplemented by cast iron drums with a steel sprocket flange and aluminium drums, whereby only the inner part of the drum on which the shoes operate are made of lamellar cast iron, namely the brake band. Additionally drums with built-in bearing kit and hub are added to this range.



- ✓ OE-equivalent
- ✓ Brembo quality
- ✓ Safety
- ✓ Durability

### Technical specifications



EAN code  
8020584215548

Axle  
Rear

Diameter  
260 mm

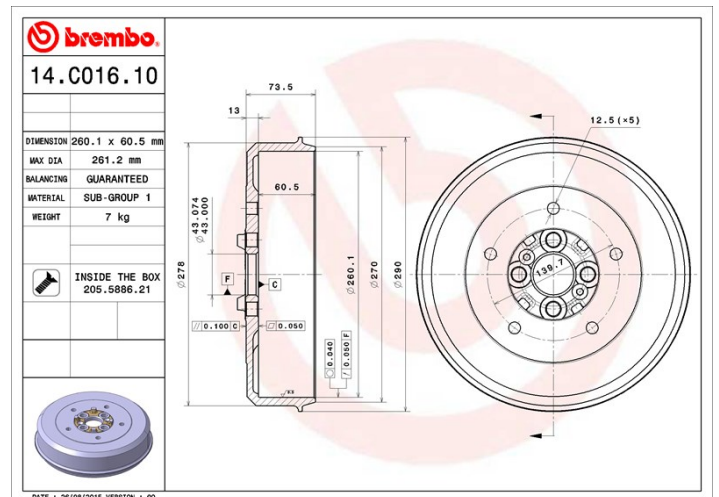
Width  
60,5 mm

Height  
73,5

Number of holes  
5

Centering  
43 mm

Max diameter  
261,2 mm



COMPATIBLE VEHICLES

## COMPATIBLE OE PART NUMBERS

0K04026251

KIA