



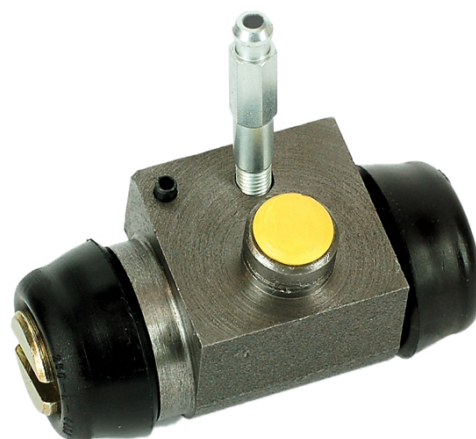
BRAKE WHEEL CYLINDER

A 12 965

The A 12 965 brake wheel cylinder is synonymous with reliability

Brembo brake wheel cylinders are subjected to checks during the entire production process to guarantee their conformity to the strictest standards. Tightness, durability and burst tests are conducted to guarantee the reliability of the product in the most critical conditions of use.

- ✓ OE-equivalent
- ✓ Brembo quality
- ✓ Safety
- ✓ Durability
- ✓ Durability test
- ✓ Tightness test
- ✓ Burst test



Technical specifications

EAN code	Axle	Diameter
8432509631225	Rear	22,2 mm
Threading	Material	
10 x 1	Cast Iron	

COMPATIBLE VEHICLES

COMPATIBLE OE PART NUMBERS

91109240 BEDFORD