



# UPGRADE GT KIT

## 1M1.9007A\_

**The 1M1.9007A\_ GT kit is synonymous with superior performance**

Complete braking systems, comprising components derived from the world of motorsports and offering unrivalled levels of technology on the market. They feature aluminium radial-mounted fixed calipers, with opposing pistons. Depending on the type of system and the required performance level, the calipers can either be in two-parts, monoblock or even monoblock machined from solid billet metal. The uprated brake discs can be integral (one-piece) or composite, drilled or slotted.



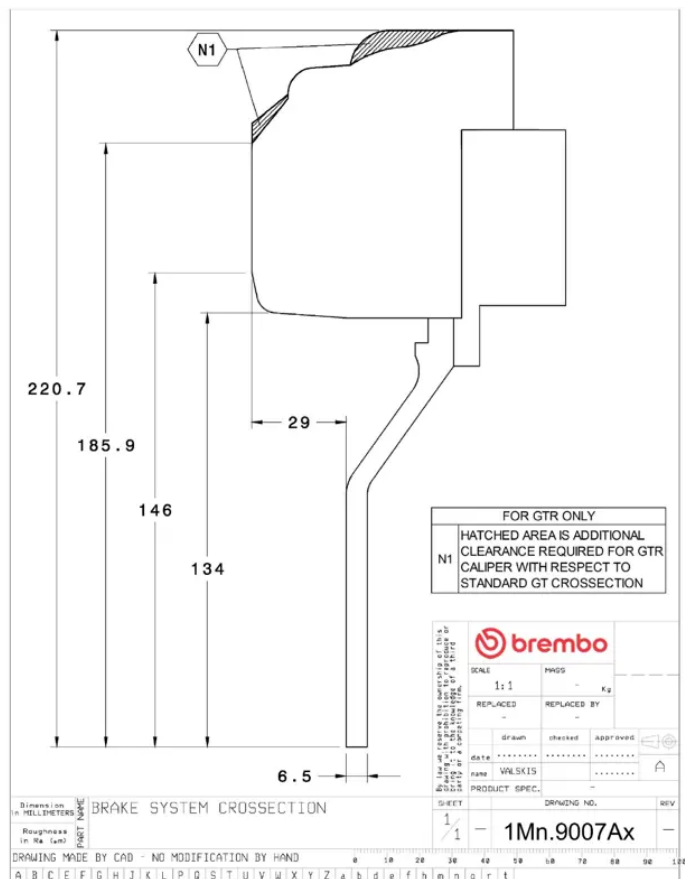
- ✓ Brembo quality
- ✓ Safety
- ✓ Performance
- ✓ Comfort
- ✓ Sports driving
- ✓ Sporty look

Available in 4 colours



A cross-sectional diagram of a microstructure. It features a central rectangular region with a width labeled  $B$  and a height labeled  $C$ . This central region is surrounded by a layer of thickness labeled  $TH$ . The entire structure is contained within a circular area with a diameter labeled  $\varnothing$ . The diagram is labeled with 'A' on the right and 'B' at the top.

Axle <b>Front</b>	Diameter <b>380 mm</b>	Thickness (TH) <b>32 mm</b>
Caliper pistons <b>6</b>	Disc type <b>2 pieces</b>	Caliper type <b>Monoblock</b>



## COMPATIBLE VEHICLES