



# UPGRADE GT KIT

## 1N2.9014A\_

**The 1N2.9014A\_ GT kit is synonymous with superior performance**

Complete braking systems, comprising components derived from the world of motorsports and offering unrivalled levels of technology on the market. They feature aluminium radial-mounted fixed calipers, with opposing pistons. Depending on the type of system and the required performance level, the calipers can either be in two-parts, monoblock or even monoblock machined from solid billet metal. The uprated brake discs can be integral (one-piece) or composite, drilled or slotted.



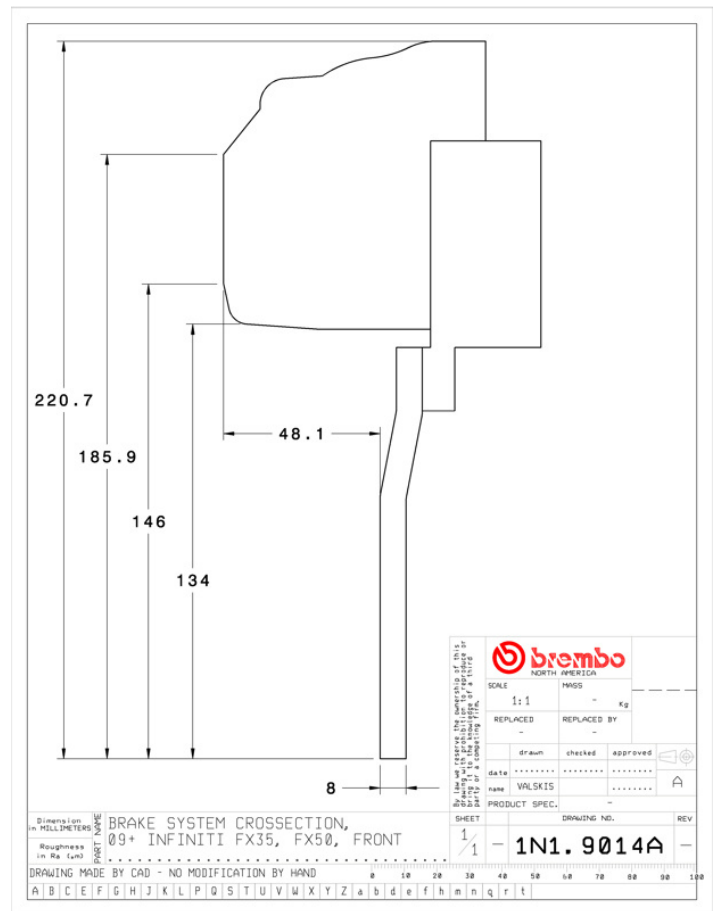
- ✓ Brembo quality
- ✓ Safety
- ✓ Performance
- ✓ Comfort
- ✓ Sports driving
- ✓ Sporty look

Available in 4 colours

 1N2.9014A1    1N2.9014A2    1N2.9014A3    1N2.9014A5

A cross-sectional diagram of a microstructure. It shows a central rectangular layer with a height labeled  $C$ . This layer is supported by a wider base layer with a total height labeled  $TH$ . The width of the central layer is labeled  $B$ . The total width of the base layer is labeled with the symbol  $\varnothing$ . The diagram is labeled with 'A' on the right and 'TH=' on the left.

Axle	Diameter	Thickness (TH)
Front	<b>380</b> mm	<b>34</b> mm
Caliper pistons	Disc type	Caliper type
<b>6</b>	<b>2 pieces</b>	<b>Monoblock</b>



## COMPATIBLE VEHICLES