



DRUM

14.7096.10

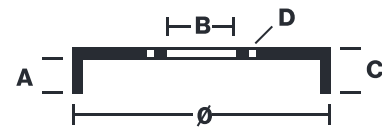
The 14.7096.10 drum is synonymous with reliability

Brembo has developed several design solutions for drum brakes which combine multiple materials to reduce the overall weight. The most popular range of lamellar graphite cast iron drums is supplemented by cast iron drums with a steel sprocket flange and aluminium drums, whereby only the inner part of the drum on which the shoes operate are made of lamellar cast iron, namely the brake band. Additionally drums with built-in bearing kit and hub are added to this range.

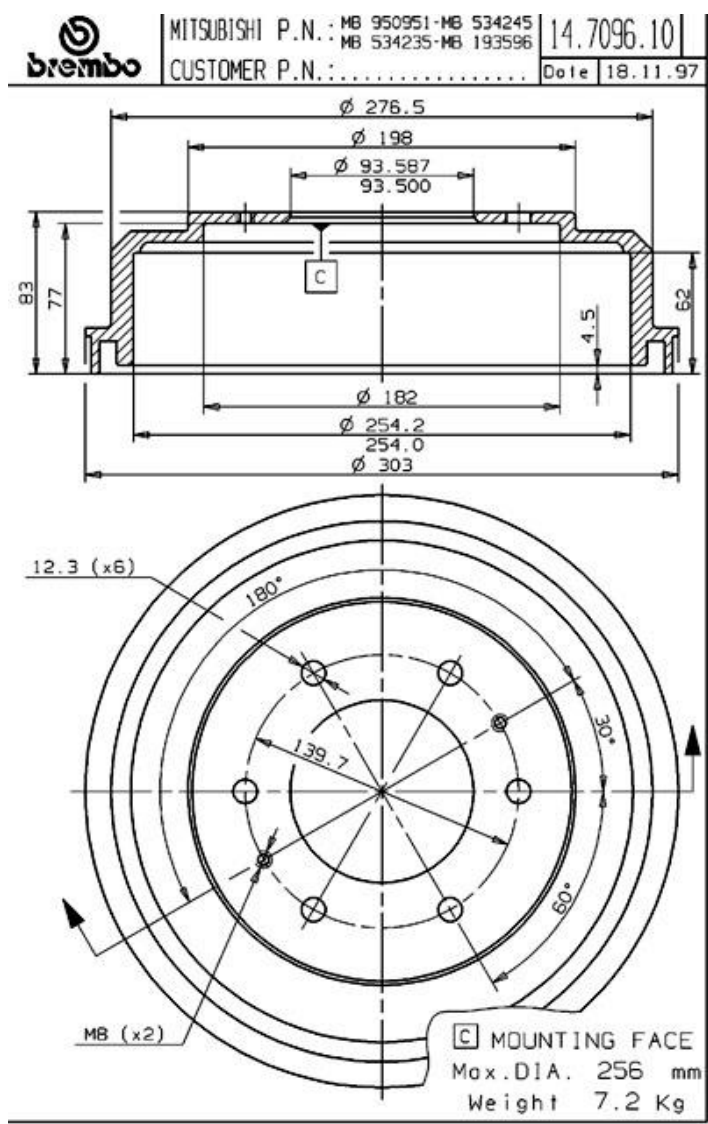


- ✓ OE-equivalent
- ✓ Brembo quality
- ✓ Safety
- ✓ Durability

Technical specifications



EAN code	Axle	Diameter
8020584709610	Rear	254 mm
Width	Height	Number of holes
62 mm	83	6
Centering	Max diameter	
93,5 mm	256 mm	



COMPATIBLE VEHICLES

COMPATIBLE OE PART NUMBERS

MB193596	DODGE
MB534245	DODGE
MB193596	MITSUBISHI
MB534245	MITSUBISHI
MB950951	MITSUBISHI
MB193596	PLYMOUTH
MB534235	PLYMOUTH
MB534245	PLYMOUTH