



DRUM

14.9380.10

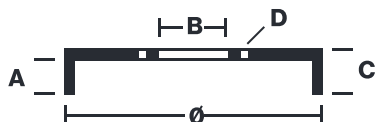
The 14.9380.10 drum is synonymous with reliability

Brembo has developed several design solutions for drum brakes which combine multiple materials to reduce the overall weight. The most popular range of lamellar graphite cast iron drums is supplemented by cast iron drums with a steel sprocket flange and aluminium drums, whereby only the inner part of the drum on which the shoes operate are made of lamellar cast iron, namely the brake band. Additionally drums with built-in bearing kit and hub are added to this range.



- ✓ OE-equivalent
- ✓ Brembo quality
- ✓ Safety
- ✓ Durability

Technical specifications



EAN code	Axle	Diameter
8020584938010	Rear	203 mm
Width	Height	Number of holes
50,5 mm	76	4
Centering	Max diameter	
54,9 mm	204,45 mm	

14.9380.10	
AP	55278
BRECO	BT 9380
DIMENSION	203.3 X 50.5 mm
MAX DIA	204.45 mm
BALANCING	GUARANTEED
MATERIAL	SUB-GROUP 1
WEIGHT	5 kg

DATE : 19/12/2003 VERSION : 00

COMPATIBLE OE PART NUMBERS

4320000QAG	NISSAN
7700304984	RENAULT