



# DRUM

## 14.A687.10

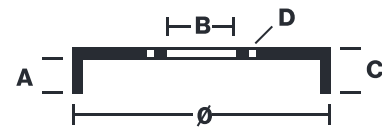
**The 14.A687.10 drum is synonymous with reliability**

Brembo has developed several design solutions for drum brakes which combine multiple materials to reduce the overall weight. The most popular range of lamellar graphite cast iron drums is supplemented by cast iron drums with a steel sprocket flange and aluminium drums, whereby only the inner part of the drum on which the shoes operate are made of lamellar cast iron, namely the brake band. Additionally drums with built-in bearing kit and hub are added to this range.

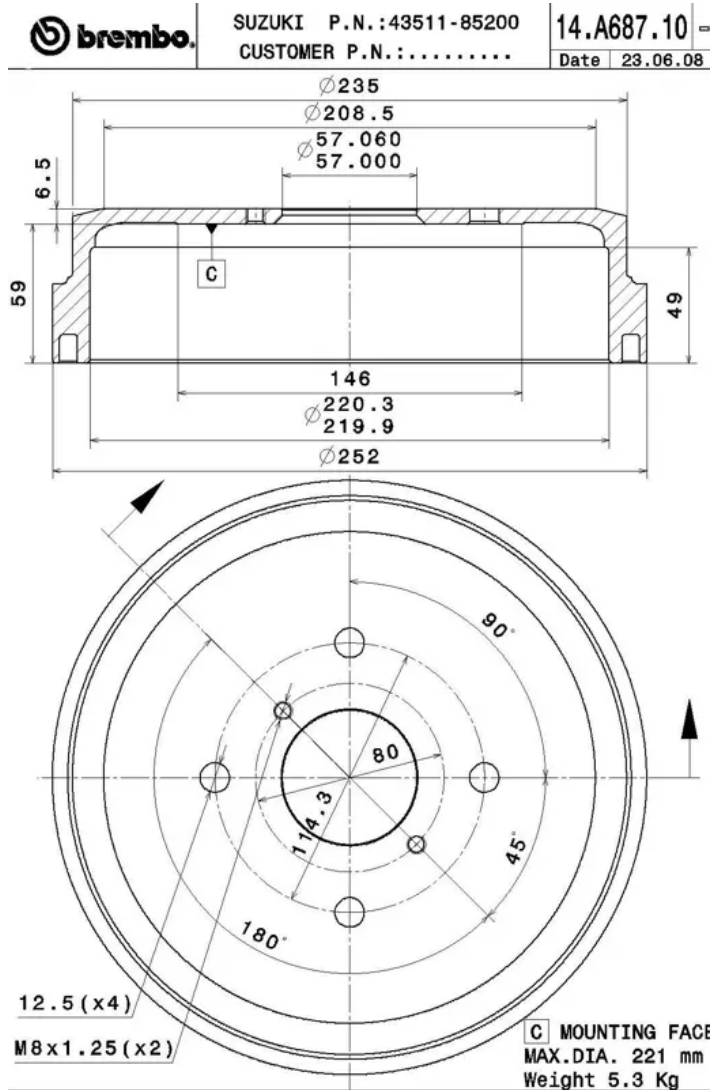


- ✓ OE-equivalent
- ✓ Brembo quality
- ✓ Safety
- ✓ Durability

Technical specifications



EAN code	Axle	Diameter
8020584023129	Rear	220 mm
Width	Height	Number of holes
49 mm	65,5	4
Centering	Max diameter	
57 mm	221 mm	



COMPATIBLE VEHICLES

COMPATIBLE OE PART NUMBERS

91112473	BEDFORD
4351185200	DAEWOO
4351185200	SUZUKI
91112473	VAUXHALL