



# DRUM

## 14.7076.10

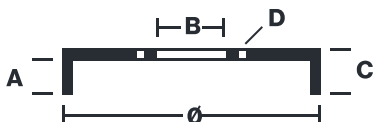
The 14.7076.10 drum is synonymous with reliability

Brembo has developed several design solutions for drum brakes which combine multiple materials to reduce the overall weight. The most popular range of lamellar graphite cast iron drums is supplemented by cast iron drums with a steel sprocket flange and aluminium drums, whereby only the inner part of the drum on which the shoes operate are made of lamellar cast iron, namely the brake band. Additionally drums with built-in bearing kit and hub are added to this range.



- ✓ OE-equivalent
- ✓ Brembo quality
- ✓ Safety
- ✓ Durability

### Technical specifications



EAN code <b>8020584707616</b>	Axle <b>Rear</b>	Diameter <b>254 mm</b>
Width <b>64,5 mm</b>	Height <b>98</b>	Number of holes <b>5</b>
Centering <b>79 mm</b>	Max diameter <b>255,6 mm</b>	

		<b>14.7076.10</b>	
AP	55205		
BREGO	BT 7076		
DIMENSION	254.2 x 63.3 mm		
MAX DIA	255.6 mm		
BALANCING	GUARANTEED		
MATERIAL	SUB-GROUP 1		
WEIGHT	9.2 kg		
E11	90R 02D01202/59682		

DATE : 24/02/2021 VERSION : 00

### COMPATIBLE VEHICLES

### COMPATIBLE OE PART NUMBERS

424738	CITROËN
1306211080	FIAT
424738	PEUGEOT