



# DRUM

## 14.7257.20

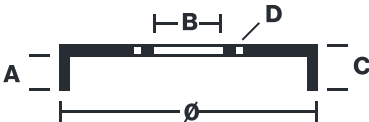
The 14.7257.20 drum is synonymous with reliability

Brembo has developed several design solutions for drum brakes which combine multiple materials to reduce the overall weight. The most popular range of lamellar graphite cast iron drums is supplemented by cast iron drums with a steel sprocket flange and aluminium drums, whereby only the inner part of the drum on which the shoes operate are made of lamellar cast iron, namely the brake band. Additionally drums with built-in bearing kit and hub are added to this range.

- ✓ OE-equivalent
- ✓ Brembo quality
- ✓ Safety
- ✓ Durability



### Technical specifications



EAN code  
8020584725726

Axle  
Rear

Diameter  
203 mm

Width  
50,5 mm

Height  
76

Number of holes  
4

Centering  
51,9 mm

Max diameter  
204,45 mm

<b>14.7257.20</b>	
AP	55314
BRECO	BT 4747
DIMENSION	203,3 x 50,7 mm
MAX DIA	204,45 mm
BALANCING	GUARANTEED
MATERIAL	SUB-GROUP 1
WEIGHT	5 kg
DATE : 22/02/2023 VERSION : 00	

## COMPATIBLE OE PART NUMBERS

432009941R DACIA

---

432023259R DACIA

---

6001550811 DACIA

---

8200243735 DACIA

---

432006468R RENAULT

---

432009941R RENAULT

---

432023259R RENAULT

---

432029521R RENAULT

---

6001550811 RENAULT

---

8200243735 RENAULT

---

8200672836 RENAULT

---