



DRUM

14.A683.10

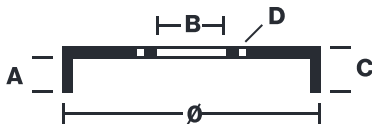
The **14.A683.10** drum is synonymous with reliability

Brembo has developed several design solutions for drum brakes which combine multiple materials to reduce the overall weight. The most popular range of lamellar graphite cast iron drums is supplemented by cast iron drums with a steel sprocket flange and aluminium drums, whereby only the inner part of the drum on which the shoes operate are made of lamellar cast iron, namely the brake band. Additionally drums with built-in bearing kit and hub are added to this range.

- ✓ OE-equivalent
- ✓ Brembo quality
- ✓ Safety
- ✓ Durability



Technical specifications



EAN code
8020584017654

Axle
Rear

Diameter
203 mm

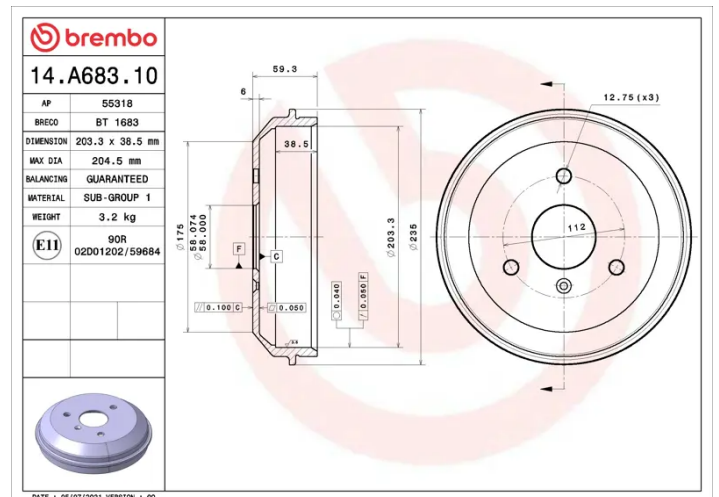
Width
38,5 mm

Height
59,3

Number of holes
3

Centering
58 mm

Max diameter
204,5 mm



COMPATIBLE VEHICLES

COMPATIBLE OE PART NUMBERS

0004329V001	SMART
0004329V001000000	SMART
0004329V003	SMART
0004329V004	SMART
4514230001	SMART