



UPGRADE GT KIT

1M2.9016A_



The 1M2.9016A_ GT kit is synonymous with superior performance

Complete braking systems, comprising components derived from the world of motorsports and offering unrivalled levels of technology on the market. They feature aluminium radial-mounted fixed calipers, with opposing pistons. Depending on the type of system and the required performance level, the calipers can either be in two-parts, monoblock or even monoblock machined from solid billet metal. The uprated brake discs can be integral (one-piece) or composite, drilled or slotted.



- ✓ Brembo quality
- ✓ Safety
- ✓ Performance
- ✓ Comfort
- ✓ Sports driving
- ✓ Sporty look

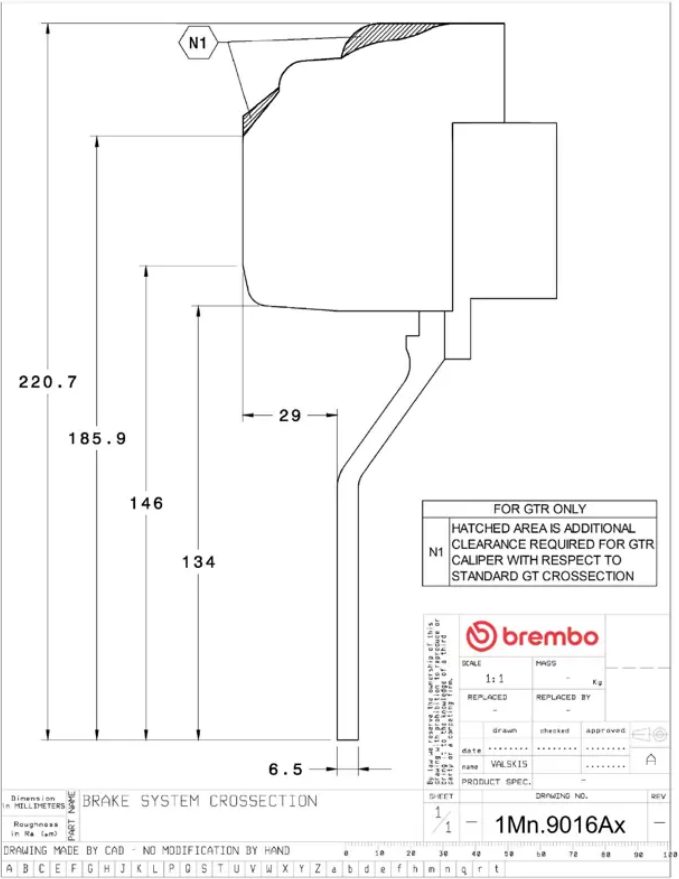
Available in 4 colours

 1M2.9016A1  1M2.9016A2  1M2.9016A3  1M2.9016A5

Technical specifications



| | | |
|-----------------|-----------|----------------|
| Axle | Diameter | Thickness (TH) |
| Front | 380 mm | 32 mm |
| Caliper pistons | Disc type | Caliper type |
| 6 | 2 pieces | Monoblock |



COMPATIBLE VEHICLES