



# UPGRADE GT KIT

## 1M2.9030A\_





**The 1M2.9030A\_ GT kit is synonymous with superior performance**

Complete braking systems, comprising components derived from the world of motorsports and offering unrivalled levels of technology on the market. They feature aluminium radial-mounted fixed calipers, with opposing pistons. Depending on the type of system and the required performance level, the calipers can either be in two-parts, monoblock or even monoblock machined from solid billet metal. The uprated brake discs can be integral (one-piece) or composite, drilled or slotted.



- ✓ Brembo quality
- ✓ Safety
- ✓ Performance
- ✓ Comfort
- ✓ Sports driving
- ✓ Sporty look

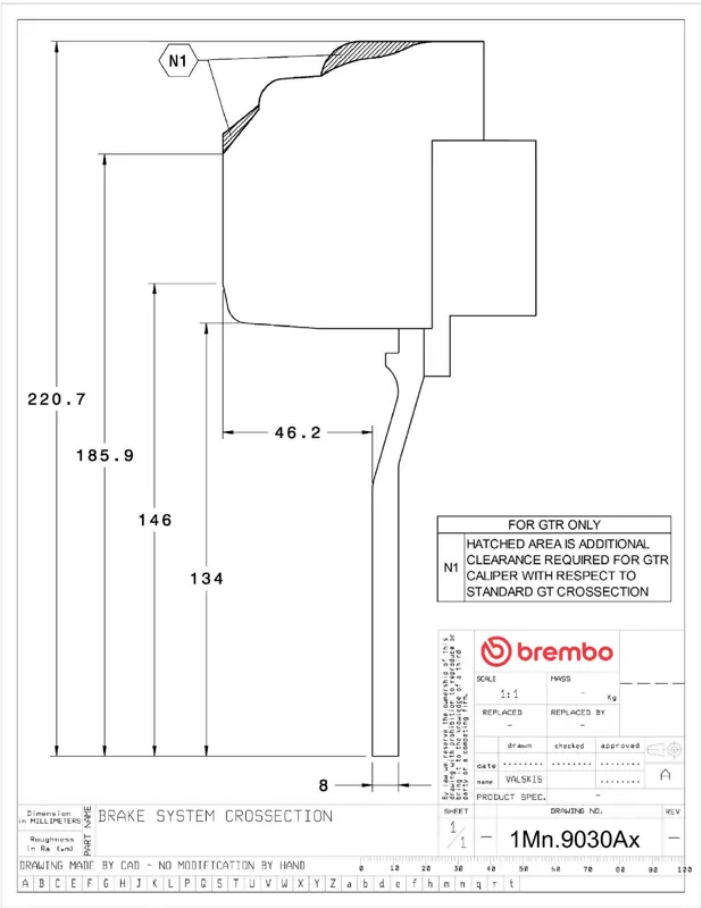
Available in 4 colours

 1M2.9030A1    1M2.9030A2    1M2.9030A3    1M2.9030A5

Technical specifications



Axle	Diameter	Thickness (TH)
Front	380 mm	32 mm
Caliper pistons	Disc type	Caliper type
6	2 pieces	Monoblock



COMPATIBLE VEHICLES