



## GROOVE 208B47010

**The 208B47010 brake disc is synonymous with reliability**

The Brembo disc dedicated to Custom and Café Racer motorbikes. The design of the hub, carved entirely from a billet, has a distinctive anthracite black finish. The result is a hi-tech look with a refined cut, further enhanced by the presence of characteristic grooves obtained by mechanical processing after the oxidation process. The ever-present red Brembo logo is set between the spokes of the brake disc hub. In brief: absolute quality and unique style.

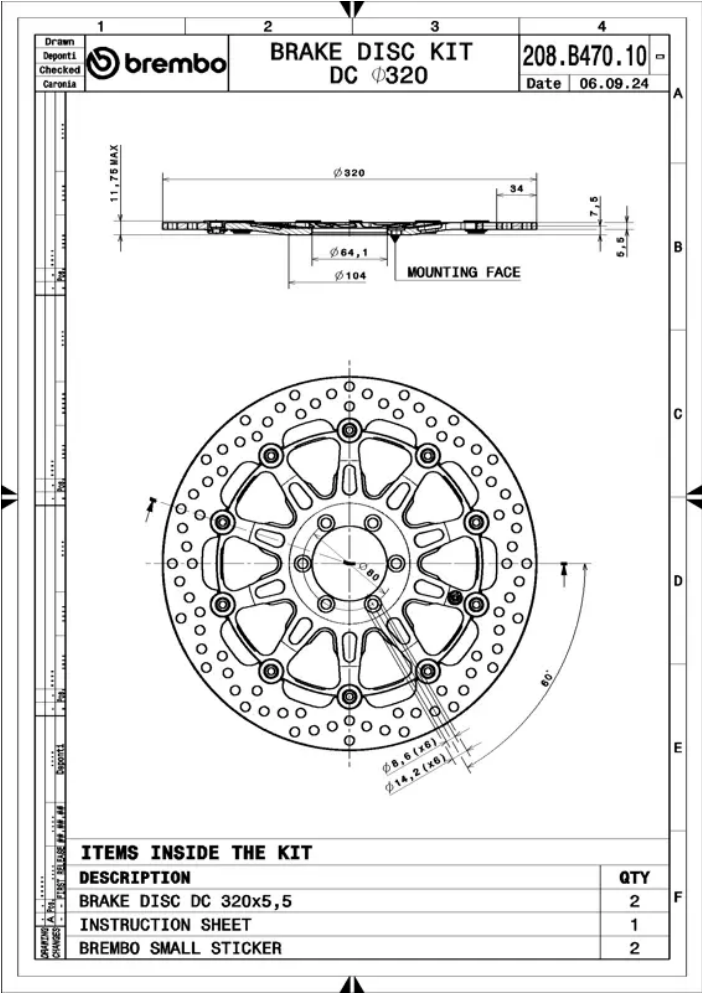
- ✓ OE-equivalent
- ✓ Brembo quality
- ✓ TUV approved
- ✓ Safety
- ✓ Performance
- ✓ Exclusive style
- ✓ Sports driving



Technical specifications



Diameter Ø	Thickness (TH)	Number of holes
320 mm	5,5 mm	6
Hole diameter	Centering (B)	Brake disc type
8,5 mm	64 mm	Floating
Off set (A)	Surface width	Holes fixing (C)
7,5 mm	34	80 mm
Units per box		
2		



COMPATIBLE VEHICLES