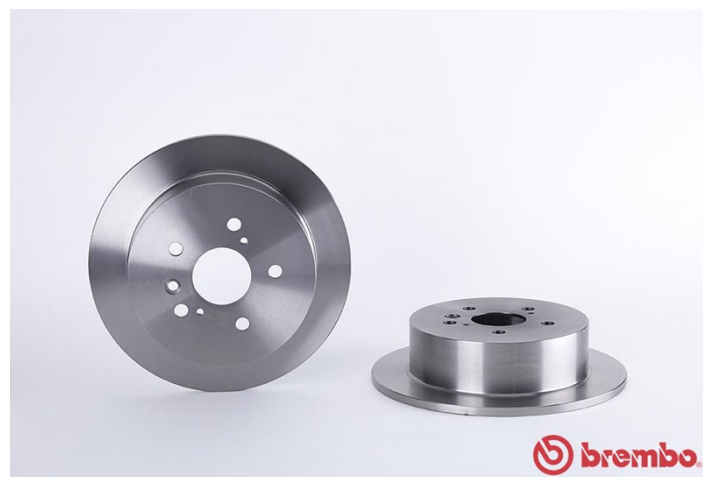


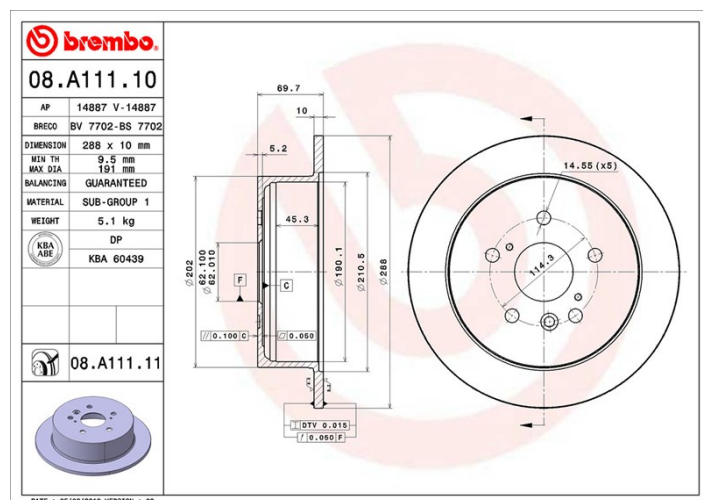
## Technische gegevens hydraulische rem

<b>As Achter</b>	<b>Diameter</b> (∅) 288 mm
<b>Totale hoogte</b> (A) 69,7 mm	<b>Diameter centreringen</b> (B) 62 mm
<b>Aantal gaten</b> (C) 5	<b>Dikte</b> (TH) 10 mm
<b>Minimumdikte</b> 8,5 mm	<b>Aanhaalmoment</b> 103 Nm
<b>Aantal per doos</b> 2	<b>EAN-code</b> 8020584016312



## Codes merken

<b>Brembo</b> 08.A111.10	<b>AP</b> 14887	<b>Breco</b> BS 7702
-----------------------------	--------------------	-------------------------



## Technische specificaties

## Compatibele voertuigen

LEXUS			
Model	Type	Kw	Jaar
RX (_U3_)	300 (MCU35_)	150	05/03 12/08
RX (_U3_)	330 (MCU38_)	171	04/03 01/06
RX (_U3_)	330 AWD (MCU38)	171	04/03 12/08
RX (_U3_)	350 (GSU35_)	201	09/06 12/08
RX (_U3_)	350 AWD (GSU35_)	203	02/06 12/08
RX (_U3_)	400h (MHU38_)	155	09/05 12/08
RX (_U3_)	400h (MHU38_)	200	09/05 12/08
RX (_U3_)	400h AWD (MHU38_)	155	09/04 12/08
TOYOTA			
Model	Type	Kw	Jaar

HARRIER (_U3_)	2.4 (ACU30_)	118	02/03 06/12
HARRIER (_U3_)	2.4 4WD (ACU35_)	118	10/03 06/12
HARRIER (_U3_)	3.0 4WD (MCU35_, MCU36_)	150	10/03 12/08
HARRIER (_U3_)	3.3 4WD	171	10/03 12/08
HARRIER (_U3_)	3.3 Hybrid 4WD (MHU38_)	155	04/05 05/12
HARRIER (_U3_)	3.5 (GSU30_)	206	04/05 12/08
HARRIER (_U3_)	3.5 4WD (GSU35_, GSU36_)	206	04/05 12/08

## OE-codes

### Compatibele OE-codes

LEXUS	4243148041
TOYOTA	4243148040
TOYOTA	4243148041
TOYOTA	4243148050