



DRUM

14.3166.10

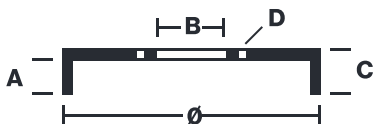
The 14.3166.10 drum is synonymous with reliability

Brembo has developed several design solutions for drum brakes which combine multiple materials to reduce the overall weight. The most popular range of lamellar graphite cast iron drums is supplemented by cast iron drums with a steel sprocket flange and aluminium drums, whereby only the inner part of the drum on which the shoes operate are made of lamellar cast iron, namely the brake band. Additionally drums with built-in bearing kit and hub are added to this range.



- ✓ OE-equivalent
- ✓ Brembo quality
- ✓ Safety
- ✓ Durability

Technical specifications



EAN code	Axle	Diameter
8020584316610	Rear	177 mm
Width	Height	Number of holes
39 mm	73	4
Centering	Max diameter	
39,9 mm	179,3 mm	

		14.3166.10	
AP	55017		
SRECO	BT 3166		
DIMENSION	177.8 x 39 mm		
MAX DIA	179.3 mm		
BALANCING	GUARANTEED		
MATERIAL	SUB-GROUP 1		
WEIGHT	3.7 kg		
		<small>DATE : 19/12/2023 VERSION : 00</small>	

COMPATIBLE VEHICLES

COMPATIBLE OE PART NUMBERS

6046462 FORD