

Technische gegevens trommel

As Achter

Diameter (Ø)
180,00 mm

Max. diameter (Max. diameter)
181,00 mm

Max. diameter
181,00 mm

Breedte
53,50 mm

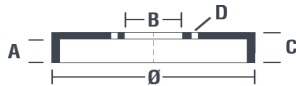
Diameter centrering (B)
52 mm

Gecombineerde hoogte (C)
79,50 mm

Aantal gaten (D)
4,00

Met lager

EAN-code
8020584560457



Compatibele voertuigen

PEUGEOT

Model	Type	Kw	Jaar
205 Box	1.7 Diesel	44	03/94 05/97
205 I (741A/C)	1.6 GTI	76	12/84 10/87
205 I (741A/C)	1.9 GTI	75	03/87 10/87
205 I Convertible (741B, 20D)	1.6 CTI	76	04/86 10/90
205 I Convertible (741B, 20D)	1.9 CTi	74	08/87 07/90
205 I Convertible (741B, 20D)	1.9 CTI	75	10/87 12/94
205 II (20A/C)	1.3 Rallye	74	10/87 10/90
205 II (20A/C)	1.6 GTI	76	10/87 12/89
205 II (20A/C)	1.6 GTI	85	10/87 12/89
205 II (20A/C)	1.6 GTX	69	01/87 10/91
205 II (20A/C)	1.8 TD	57	01/90 09/98
205 II (20A/C)	1.8 XDT	58	08/90 05/97
205 II (20A/C)	1.9 GTI	75	10/87 05/89
205 II (20A/C)	1.9 GTI Cat	75	10/87 07/94
309 I (10C, 10A)	1.1	40	10/85 07/89
309 I (10C, 10A)	1.3	47	10/85 07/89

309 I (10C, 10A)	1.4	49	03/89 07/89
309 I (10C, 10A)	1.4	55	03/89 07/89
309 I (10C, 10A)	1.4	62	08/88 08/89
309 I (10C, 10A)	1.5	63	06/87 12/89
309 I (10C, 10A)	1.6	69	01/86 07/89
309 I (10C, 10A)	1.6	83	07/86 06/89
309 I (10C, 10A)	1.6	53	08/87 07/89
309 I (10C, 10A)	1.6	55	10/85 07/89
309 I (10C, 10A)	1.6	59	10/85 07/89
309 I (10C, 10A)	1.6	76	11/85 09/88
309 I (10C, 10A)	1.6 Cat	55	09/86 12/89
309 I (10C, 10A)	1.9	72	03/86 07/89
309 I (10C, 10A)	1.9	80	07/88 07/89
309 I (10C, 10A)	1.9	75	10/85 07/89
309 I (10C, 10A)	1.9 D	47	06/86 07/89
309 II (3C, 3A)	1.1	44	08/90 12/93
309 II (3C, 3A)	1.1	40	09/89 10/93
309 II (3C, 3A)	1.4	55	07/89 12/93
309 II (3C, 3A)	1.4	49	07/90 12/93
309 II (3C, 3A)	1.6	65	07/89 12/93
309 II (3C, 3A)	1.6	68	07/89 12/93
309 II (3C, 3A)	1.6	69	07/89 12/93
309 II (3C, 3A)	1.8 Diesel	44	07/89 12/93
309 II (3C, 3A)	1.8 TD	57	08/89 12/93
309 II (3C, 3A)	1.9	72	08/89 12/93
309 II (3C, 3A)	1.9	80	10/90 12/93
309 II (3C, 3A)	1.9 Diesel	47	07/89 12/93

OE-codes

Compatibele OE-codes