



DRUM

14.7246.10

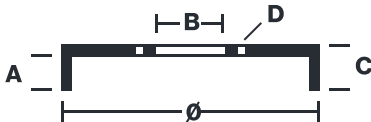
The 14.7246.10 drum is synonymous with reliability

Brembo has developed several design solutions for drum brakes which combine multiple materials to reduce the overall weight. The most popular range of lamellar graphite cast iron drums is supplemented by cast iron drums with a steel sprocket flange and aluminium drums, whereby only the inner part of the drum on which the shoes operate are made of lamellar cast iron, namely the brake band. Additionally drums with built-in bearing kit and hub are added to this range.

- ✓ OE-equivalent
- ✓ Brembo quality
- ✓ Safety
- ✓ Durability



Technical specifications



EAN code
8020584724613

Axle
Rear

Diameter
180 mm

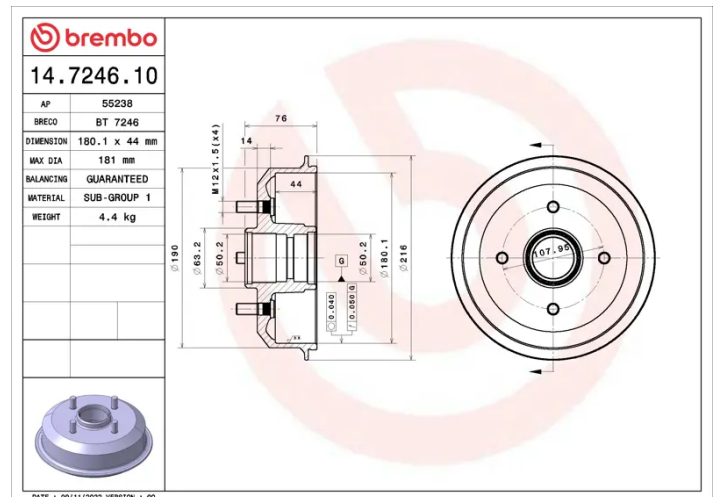
Width
44 mm

Height
76

Number of holes
4

Centering
50,3 mm

Max diameter
181 mm



COMPATIBLE VEHICLES

COMPATIBLE OE PART NUMBERS

1000859	FORD
1017668	FORD
1045392	FORD
1499061	FORD
4034886	FORD
75511113AA	FORD
89FB1113AD	FORD
96FB1113AB	FORD
96FB1113BB	FORD
96FB1113BC	FORD
97FB1113BA	FORD
YS6W1113AA	FORD
1E0126251	MAZDA
1E0226251	MAZDA