



# DRUM

## 14.9390.10

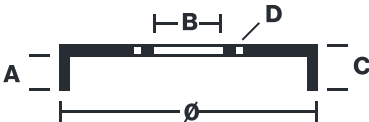
The 14.9390.10 drum is synonymous with reliability

Brembo has developed several design solutions for drum brakes which combine multiple materials to reduce the overall weight. The most popular range of lamellar graphite cast iron drums is supplemented by cast iron drums with a steel sprocket flange and aluminium drums, whereby only the inner part of the drum on which the shoes operate are made of lamellar cast iron, namely the brake band. Additionally drums with built-in bearing kit and hub are added to this range.



- ✓ OE-equivalent
- ✓ Brembo quality
- ✓ Safety
- ✓ Durability

### Technical specifications



EAN code <b>8020584939017</b>	Axle <b>Rear</b>	Diameter <b>230 mm</b>
Width <b>50 mm</b>	Height <b>65,5</b>	Number of holes <b>5</b>
Centering <b>65,5 mm</b>	Max diameter <b>231 mm</b>	

		<b>14.9390.10</b>	
AP	55286		
SRECO	BT 9390		
DIMENSION	230.1 x 50 mm		
MAX DIA	231 mm		
BALANCING	GUARANTEED		
MATERIAL	SUB-GROUP 1		
WEIGHT	4.1 kg		
		<small>DATE : 19/12/2023 VERSION : 00</small>	

## COMPATIBLE VEHICLES

### COMPATIBLE OE PART NUMBERS

568060	OPEL
90538928	OPEL
90538928	VAUXHALL