



DRUM

14.A691.10

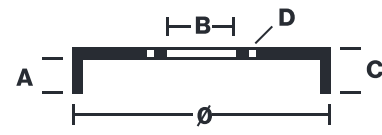
The 14.A691.10 drum is synonymous with reliability

Brembo has developed several design solutions for drum brakes which combine multiple materials to reduce the overall weight. The most popular range of lamellar graphite cast iron drums is supplemented by cast iron drums with a steel sprocket flange and aluminium drums, whereby only the inner part of the drum on which the shoes operate are made of lamellar cast iron, namely the brake band. Additionally drums with built-in bearing kit and hub are added to this range.

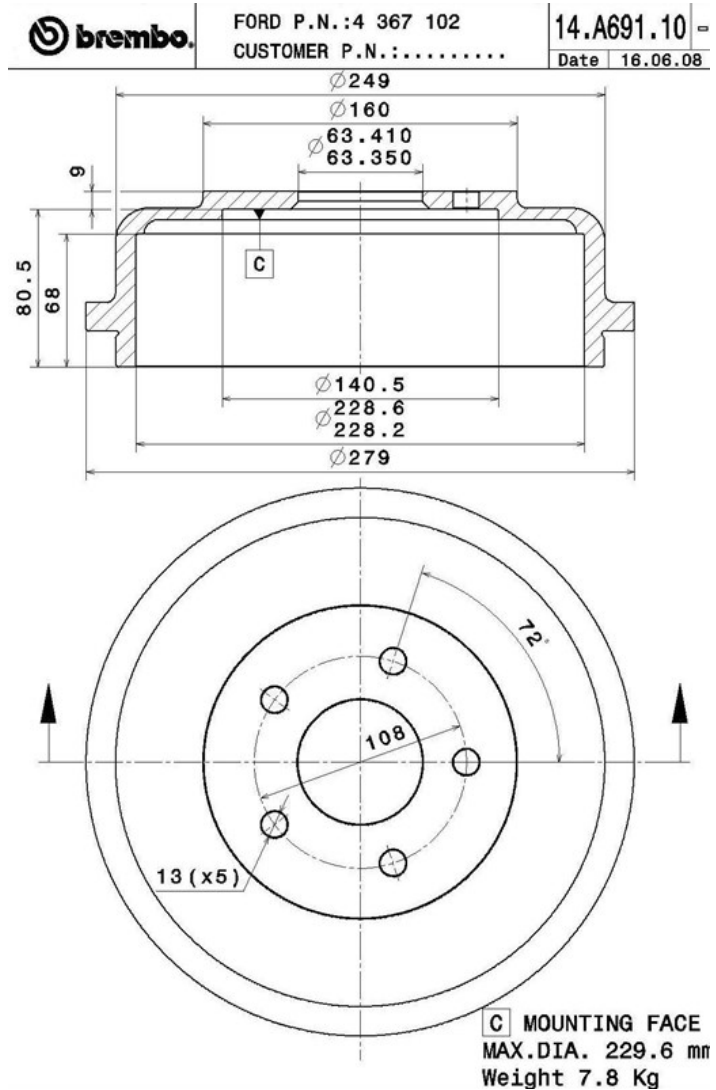


- ✓ OE-equivalent
- ✓ Brembo quality
- ✓ Safety
- ✓ Durability

Technical specifications



EAN code	Axle	Diameter
8020584017135	Rear	228 mm
Width	Height	Number of holes
68 mm	89,5	5
Centering	Max diameter	
63,4 mm	229,6 mm	



COMPATIBLE VEHICLES

COMPATIBLE OE PART NUMBERS

1334975	FORD
1361302	FORD
1361304	FORD
4367102	FORD
4367103	FORD
4455981	FORD
4467600	FORD
AT161126AA	FORD