



# UPGRADE GT KIT

## 2P2.9036A\_

The 2P2.9036A\_ GT kit is synonymous with superior performance

Complete braking systems, comprising components derived from the world of motorsports and offering unrivalled levels of technology on the market. They feature aluminium radial-mounted fixed calipers, with opposing pistons. Depending on the type of system and the required performance level, the calipers can either be in two-parts, monoblock or even monoblock machined from solid billet metal. The uprated brake discs can be integral (one-piece) or composite, drilled or slotted.



- ✓ Brembo quality
- ✓ Safety
- ✓ Performance
- ✓ Comfort
- ✓ Sports driving
- ✓ Sparty look

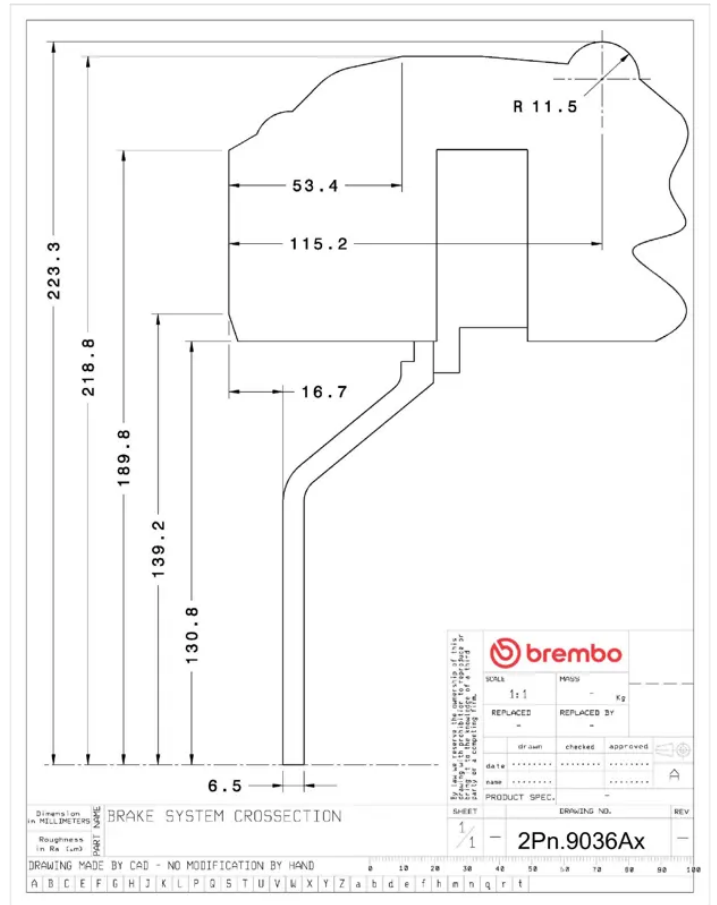
Available in 4 colours

- 2P2.9036A1
- 2P2.9036A2
- 2P2.9036A3
- 2P2.9036A5

## Technical specifications



Axle	Diameter	Thickness (TH)
Rear	<b>380 mm</b>	<b>28 mm</b>
Caliper pistons	Disc type	Caliper type
<b>4</b>	<b>2 pieces</b>	<b>Monoblock</b>



COMPATIBLE VEHICLES