



UPGRADE GT KIT

1M1.9054A_

The 1M1.9054A_ GT kit is synonymous with superior performance

Complete braking systems, comprising components derived from the world of motorsports and offering unrivalled levels of technology on the market. They feature aluminium radial-mounted fixed calipers, with opposing pistons. Depending on the type of system and the required performance level, the calipers can either be in two-parts, monoblock or even monoblock machined from solid billet metal. The uprated brake discs can be integral (one-piece) or composite, drilled or slotted.



- ✓ Brembo quality
- ✓ Safety
- ✓ Performance
- ✓ Comfort
- ✓ Sports driving
- ✓ Sporty look

Available in 4 colours



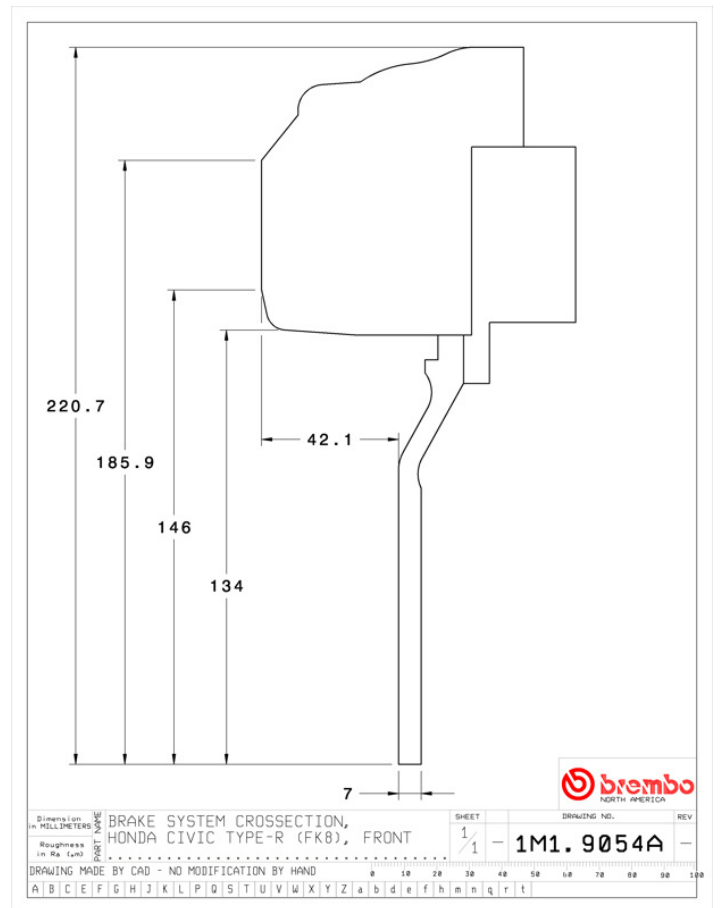
-  1M1.9054A1
-  1M1.9054A2
-  1M1.9054A3
-  1M1.9054A5

Diagram illustrating the cross-sectional structure of the device. The structure consists of a central layer of thickness C (indicated by a vertical dimension line) and a substrate of thickness TH (indicated by a vertical dimension line). The width of the central layer is labeled B (indicated by a horizontal dimension line). The total width of the device is labeled \varnothing (indicated by a horizontal dimension line). The top surface is labeled A .

Axle	Diameter	Thickness (TH)
Front	380 mm	32 mm
Caliper pistons	Disc type	Caliper type
6	2 pieces	Monoblock



COMPATIBLE VEHICLES