



# DRUM

## 14.5826.50

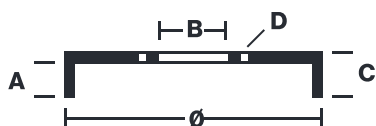
The 14.5826.50 drum is synonymous with reliability

Brembo has developed several design solutions for drum brakes which combine multiple materials to reduce the overall weight. The most popular range of lamellar graphite cast iron drums is supplemented by cast iron drums with a steel sprocket flange and aluminium drums, whereby only the inner part of the drum on which the shoes operate are made of lamellar cast iron, namely the brake band. Additionally drums with built-in bearing kit and hub are added to this range.

- ✓ OE-equivalent
- ✓ Brembo quality
- ✓ Safety
- ✓ Durability
- ✓ Bearing kit



### Technical specifications



EAN code  
8020584582657

Axle  
Rear

Diameter  
200 mm

Width  
49,5 mm

Height  
81

Number of holes  
4

Centering  
39,9 mm

Max diameter  
201 mm

Bearing kit

		<b>14.5826.50</b>	
AP	55254		
BRECO	BK 5826		
DIMENSION	200.1 x 49.8 mm		
MAX DIA	201 mm		
BALANCING	GUARANTEED		
MATERIAL	SUB-GROUP 1		
WEIGHT	5.5 kg		

DATE : 03/02/2023 VERSION : 00

COMPATIBLE VEHICLES