



UPGRADE GT KIT

1G2.9022A_



The 1G2.9022A_ GT kit is synonymous with superior performance

Complete braking systems, comprising components derived from the world of motorsports and offering unrivalled levels of technology on the market. They feature aluminium radial-mounted fixed calipers, with opposing pistons. Depending on the type of system and the required performance level, the calipers can either be in two-parts, monoblock or even monoblock machined from solid billet metal. The uprated brake discs can be integral (one-piece) or composite, drilled or slotted.

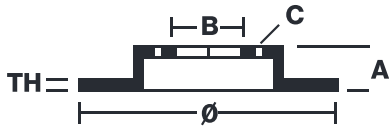


- ✓ Brembo quality
- ✓ Safety
- ✓ Performance
- ✓ Comfort
- ✓ Sports driving
- ✓ Sparty look

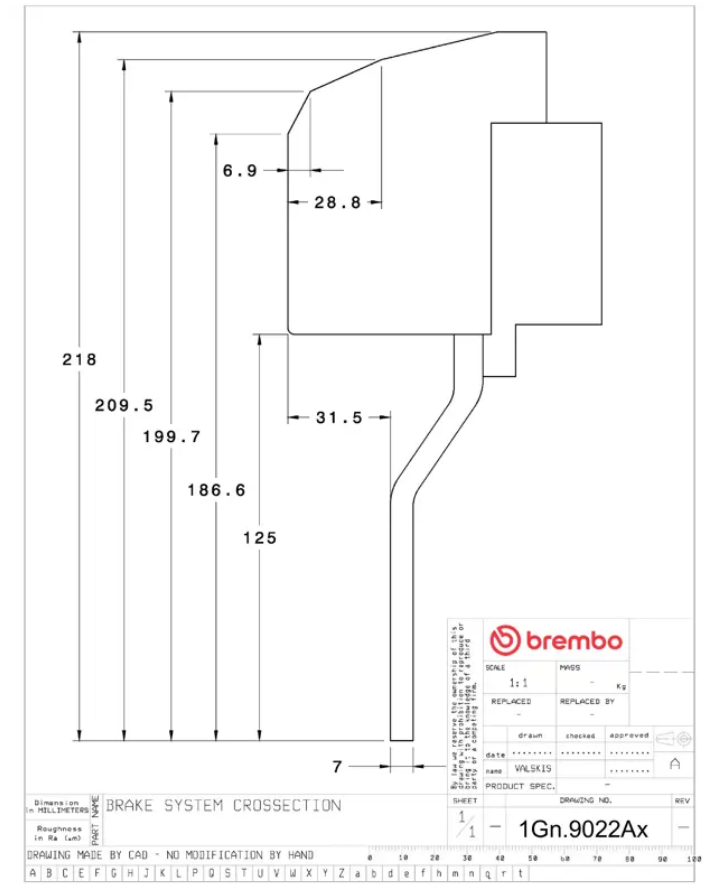
Available in 3 colours

 1G2.9022A1  1G2.9022A2  1G2.9022A3

Technical specifications



Axle	Diameter	Thickness (TH)
Front	380 mm	34 mm
Caliper pistons	Disc type	Caliper type
8	2 pieces	Monoblock



Dimension in MILLIMETERS	BRAKE SYSTEM CROSECTION		SHEET	1	1
Roughness in Ra (µm)	DRAWING NO.		1Gn.9022Ax		
DRAWING MADE BY CAD - NO MODIFICATION BY HAND					
A B C D E F G H J K L P Q R S T U V W X Y Z a b c d e f g h i j k l m n o p q r t					