



DRUM

14.4719.10

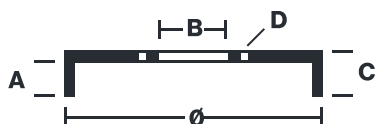
The 14.4719.10 drum is synonymous with reliability

Brembo has developed several design solutions for drum brakes which combine multiple materials to reduce the overall weight. The most popular range of lamellar graphite cast iron drums is supplemented by cast iron drums with a steel sprocket flange and aluminium drums, whereby only the inner part of the drum on which the shoes operate are made of lamellar cast iron, namely the brake band. Additionally drums with built-in bearing kit and hub are added to this range.

- ✓ OE-equivalent
- ✓ Brembo quality
- ✓ Safety
- ✓ Durability



Technical specifications



EAN code
8020584471913

Axle
Rear

Diameter
200 mm

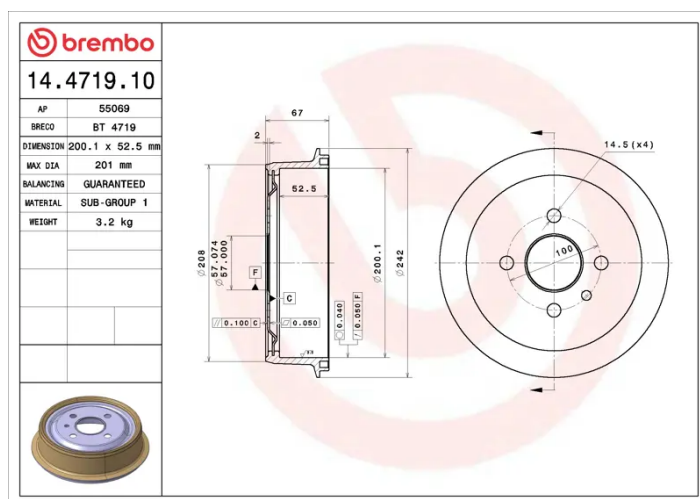
Width
52,5 mm

Height
67

Number of holes
4

Centering
57 mm

Max diameter
201 mm



COMPATIBLE VEHICLES

COMPATIBLE OE PART NUMBERS

91024352	BEDFORD
568039	CHEVROLET
568054	CHEVROLET
568057	CHEVROLET
91024352	CHEVROLET
90168958	DAEWOO
96175281	DAEWOO
568039	OPEL
568054	OPEL
568057	OPEL
90105445	OPEL
90168958	OPEL
91024352	OPEL
90168958	PONTIAC
91024352	VAUXHALL