



DRUM

14.7713.10

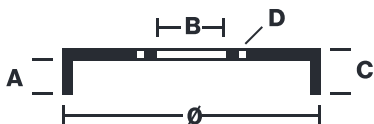
The 14.7713.10 drum is synonymous with reliability

Brembo has developed several design solutions for drum brakes which combine multiple materials to reduce the overall weight. The most popular range of lamellar graphite cast iron drums is supplemented by cast iron drums with a steel sprocket flange and aluminium drums, whereby only the inner part of the drum on which the shoes operate are made of lamellar cast iron, namely the brake band. Additionally drums with built-in bearing kit and hub are added to this range.

- ✓ OE-equivalent
- ✓ Brembo quality
- ✓ Safety
- ✓ Durability



Technical specifications



EAN code 8020584771310	Axle Rear	Diameter 228 mm
Width 55 mm	Height 64	Number of holes 5
Centering 62 mm	Max diameter 230,6 mm	

		14.7713.10	
AP	55261		
BREGO	BT 7713		
DIMENSION	228.6 x 55 mm		
MAX DIA	230.6 mm		
BALANCING	GUARANTEED		
MATERIAL	SUB-GROUP 1		
WEIGHT	4.6 kg		
	90R		
	02D01202/59686		

DATE : 12/11/2021 VERSION : 00

COMPATIBLE VEHICLES

COMPATIBLE OE PART NUMBERS

4243142010	TOYOTA
4243142011	TOYOTA
4343142011	TOYOTA