



# DRUM

## 14.A152.20

**The 14.A152.20 drum is synonymous with reliability**

Brembo has developed several design solutions for drum brakes which combine multiple materials to reduce the overall weight. The most popular range of lamellar graphite cast iron drums is supplemented by cast iron drums with a steel sprocket flange and aluminium drums, whereby only the inner part of the drum on which the shoes operate are made of lamellar cast iron, namely the brake band. Additionally drums with built-in bearing kit and hub are added to this range.

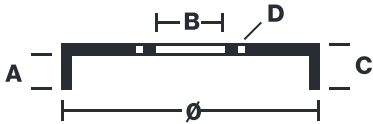


- ✓ OE-equivalent
- ✓ Brembo quality
- ✓ Safety
- ✓ Durability

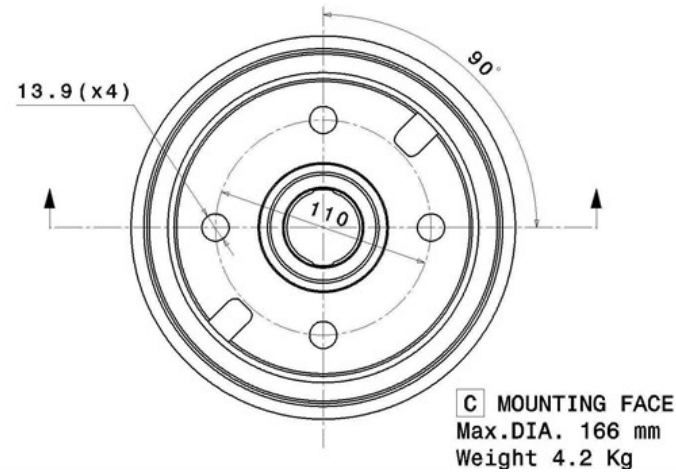
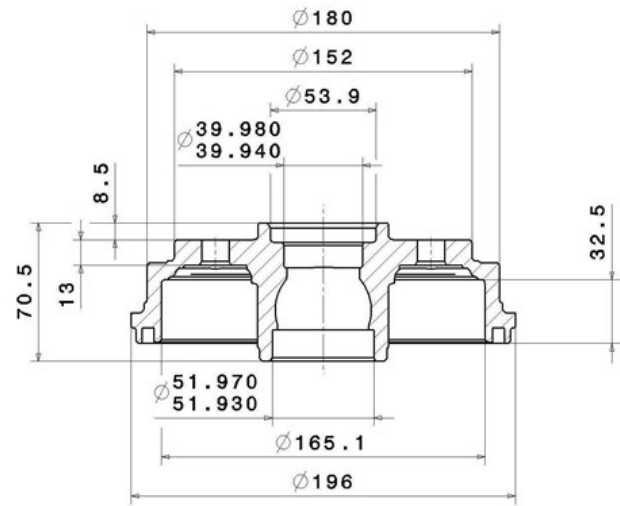
Technical specifications



PERODUA P.N.:42403 87222 000 14.A152.20  
CUSTOMER P.N.:..... Date 20.12.06



EAN code	Axle	Diameter
8020584017104	Rear	165 mm
Width	Height	Number of holes
32,5 mm	70,5	4
Centering	Max diameter	
39,9 mm	166 mm	



COMPATIBLE VEHICLES

COMPATIBLE OE PART NUMBERS

4240387222000	DAIHATSU
4240387222000	PERODUA