



**DRUM**  
**14.B986.10**

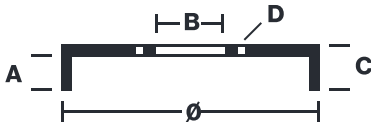
## The 14.B986.10 drum is synonymous with reliability

Brembo has developed several design solutions for drum brakes which combine multiple materials to reduce the overall weight. The most popular range of lamellar graphite cast iron drums is supplemented by cast iron drums with a steel sprocket flange and aluminium drums, whereby only the inner part of the drum on which the shoes operate are made of lamellar cast iron, namely the brake band. Additionally drums with built-in bearing kit and hub are added to this range.



- ✓ OE-equivalent
- ✓ Brembo quality
- ✓ Safety
- ✓ Durability

## Technical specifications



EAN code  
**8020584030639**

Axle  
Rear

Diameter  
**203,2** mm

Width  
**50,5** mm

Height  
**56,3**

Number of holes  
4

Centering  
**62,5** mm

Max diameter  
**205,2** mm

**14. B986.10**

AP	55098
BRECO	BT 1181
DIMENSION	203.3 x 40.5 mm
MAX DIA	205.2 mm
BALANCING	GUARANTEED
MATERIAL	SUB-GROUP 1
WEIGHT	4 kg
<b>E11</b>	90R 02D01202/59684

Technical drawing showing the side and front views of a Brembo brake disc. The side view includes dimensions: 6, 57.5, 40.5, 203.3, 217.8, 62.500, 62.500, 100.00, 0.050, 0.440, 0.030, 243.5. The front view shows 12.65 (x4) holes and a 100mm diameter.

## COMPATIBLE VEHICLES

## COMPATIBLE OE PART NUMBERS

584111G000	HYUNDAI
K584111G000	HYUNDAI
584111G000	KIA