



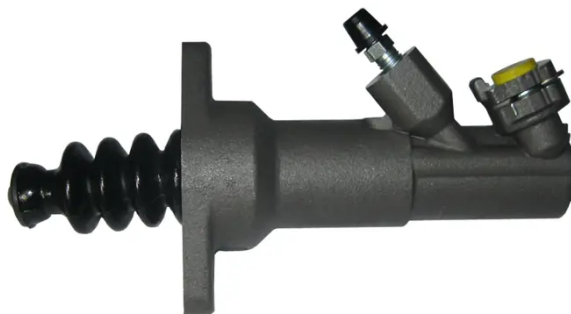
# CLUTCH CYLINDER

## E 85 024

The E 85 024 clutch cylinder is synonymous with reliability

Brembo's range of clutch cylinders consists not only of external clutch cylinders but also concentric clutch slave cylinders. The concentric clutch slave cylinder combines the functions of the thrust bearing and of the clutch cylinder in a single part. The clutch is therefore operated directly by the concentric actuator which performs the functions of the clutch cylinder and of the thrust bearing.

- ✓ OE-equivalent
- ✓ Brembo quality
- ✓ Safety
- ✓ Durability
- ✓ Durability test
- ✓ Tightness test



### Technical specifications

EAN code	Axle	Diameter
8432509658659		19 mm
Threading	Material	
12 X 9	Aluminium	

### COMPATIBLE OE PART NUMBERS

6N0721261A	AUDI
6N0721261C	AUDI