



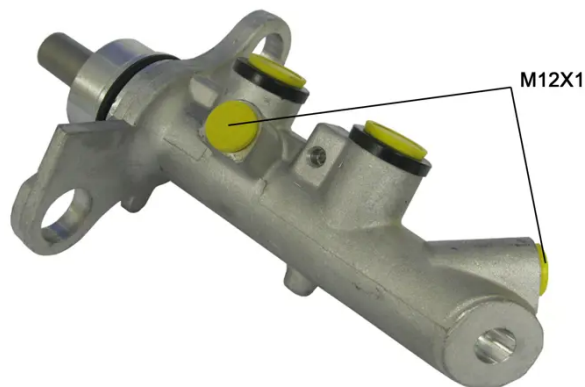
CLUTCH MASTER CYLINDER

M 68 052

The M 68 052 brake master cylinder is synonymous with reliability

For the braking system to work well, all the components of the brake master cylinder must meet the highest standards of quality and strength. All Brembo brake master cylinders are subjected to complete in-line checks which guarantee conformity to the strictest standards.

- ✓ OE-equivalent
- ✓ Brembo quality
- ✓ Safety
- ✓ Durability
- ✓ Durability test
- ✓ Tightness test
- ✓ Burst test



Technical specifications

| | | |
|---------------|----------------|-----------|
| EAN code | Axle | Diameter |
| 8432509638644 | | 23,81 mm |
| Threading | Braking system | Material |
| 12 x 1 (2) | TRW | Aluminium |

COMPATIBLE VEHICLES

COMPATIBLE OE PART NUMBERS

7701207697

RENAULT