

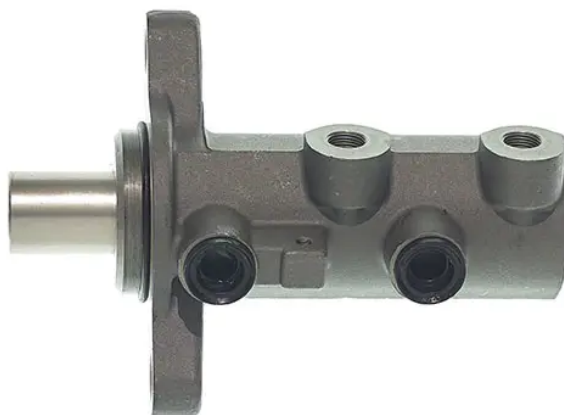


CLUTCH MASTER CYLINDER M A6 025

The M A6 025 brake master cylinder is synonymous with reliability

For the braking system to work well, all the components of the brake master cylinder must meet the highest standards of quality and strength. All Brembo brake master cylinders are subjected to complete in-line checks which guarantee conformity to the strictest standards.

- ✓ OE-equivalent
- ✓ Brembo quality
- ✓ Safety
- ✓ Durability
- ✓ Durability test
- ✓ Tightness test
- ✓ Burst test



Technical specifications

EAN code
8432509654767

Axle

Diameter
25,4 mm

Threading
12 X 1 (2)

Material
Aluminium

COMPATIBLE VEHICLES

COMPATIBLE OE PART NUMBERS

42568306

IVECO