



UPGRADE GT KIT

1T2.8501A_

The 1T2.8501A_ GT kit is synonymous with superior performance

Complete braking systems, comprising components derived from the world of motorsports and offering unrivalled levels of technology on the market. They feature aluminium radial-mounted fixed calipers, with opposing pistons. Depending on the type of system and the required performance level, the calipers can either be in two-parts, monoblock or even monoblock machined from solid billet metal. The uprated brake discs can be integral (one-piece) or composite, drilled or slotted.



- ✓ Brembo quality
- ✓ Safety
- ✓ Performance
- ✓ Comfort
- ✓ Sports driving
- ✓ Sparty look

Available in 5 colours

- 1T2.8501A1
- 1T2.8501A2
- 1T2.8501A5
- 1T2.8501A6
- 1T2.8501A7

Technical specifications

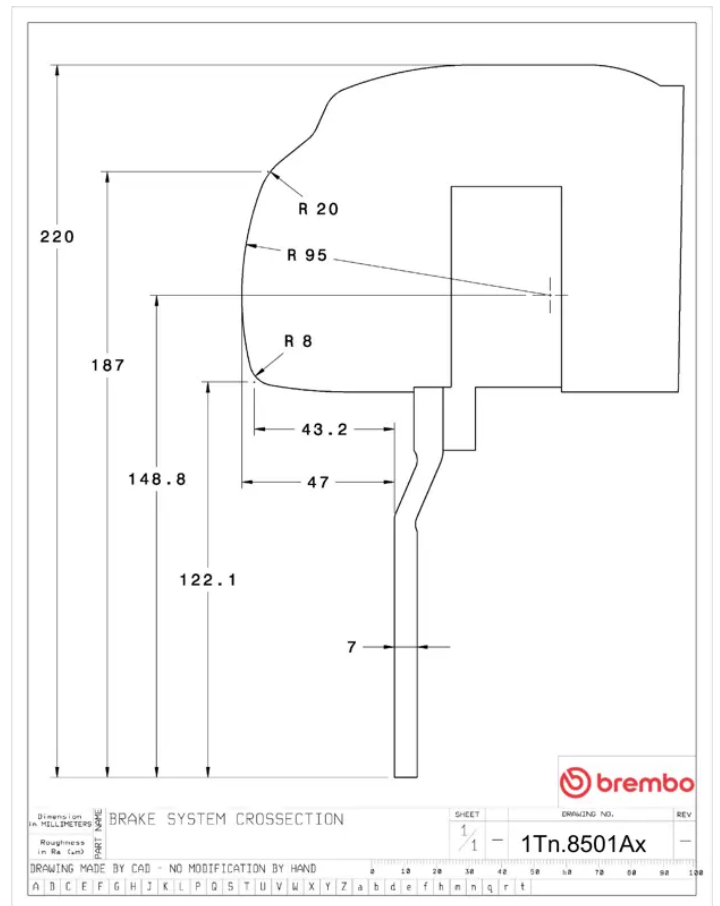


Axle
Front
Diameter
365 mm

Caliper pistons
6
Disc type
2 pieces

Thickness (TH)
34 mm

Caliper type
BM monoblock



COMPATIBLE VEHICLES