



# DRUM

## 14.3164.10

**The 14.3164.10 drum is synonymous with reliability**

Brembo has developed several design solutions for drum brakes which combine multiple materials to reduce the overall weight. The most popular range of lamellar graphite cast iron drums is supplemented by cast iron drums with a steel sprocket flange and aluminium drums, whereby only the inner part of the drum on which the shoes operate are made of lamellar cast iron, namely the brake band. Additionally drums with built-in bearing kit and hub are added to this range.

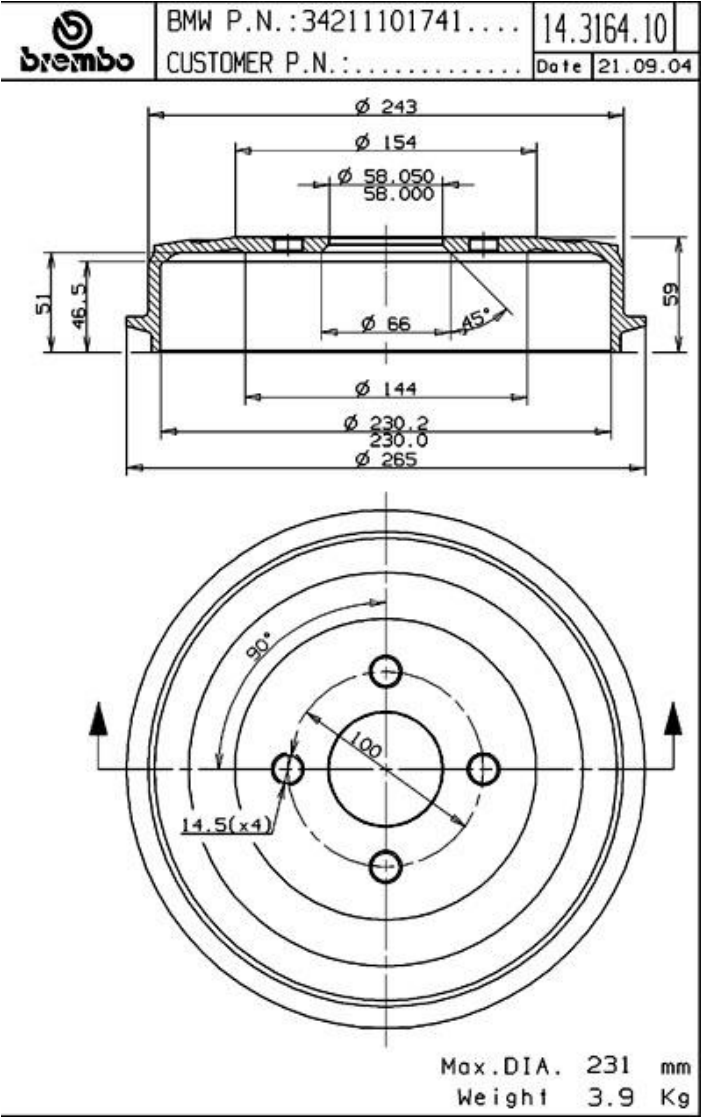
- ✓ OE-equivalent
- ✓ Brembo quality
- ✓ Safety
- ✓ Durability



Technical specifications



EAN code	Axle	Diameter
8020584316412	Rear	230 mm
Width	Height	Number of holes
46,5 mm	59	4
Centering	Max diameter	
58 mm	231 mm	



COMPATIBLE VEHICLES

COMPATIBLE OE PART NUMBERS

34211101741	BMW
-------------	-----