

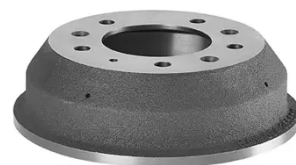


DRUM

14.3178.10

The 14.3178.10 drum is synonymous with reliability

Brembo has developed several design solutions for drum brakes which combine multiple materials to reduce the overall weight. The most popular range of lamellar graphite cast iron drums is supplemented by cast iron drums with a steel sprocket flange and aluminium drums, whereby only the inner part of the drum on which the shoes operate are made of lamellar cast iron, namely the brake band. Additionally drums with built-in bearing kit and hub are added to this range.

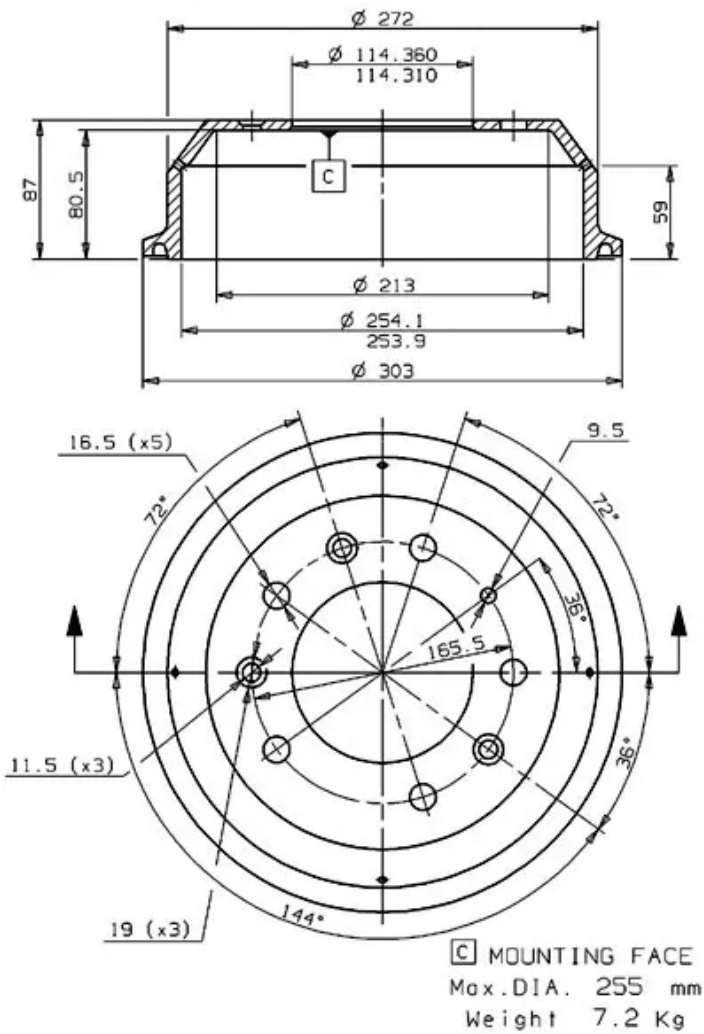


- ✓ OE-equivalent
- ✓ Brembo quality
- ✓ Safety
- ✓ Durability

Technical specifications



EAN code	Diameter	
8020584317815	254 mm	
Width	Height	Number of holes
59 mm	87	5
Centering	Max diameter	
114,3 mm	255 mm	



COMPATIBLE OE PART NUMBERS

591039	LAND ROVER
--------	------------