



# DRUM

## 14.A152.10

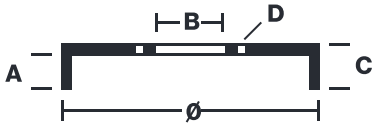
**The 14.A152.10 drum is synonymous with reliability**

Brembo has developed several design solutions for drum brakes which combine multiple materials to reduce the overall weight. The most popular range of lamellar graphite cast iron drums is supplemented by cast iron drums with a steel sprocket flange and aluminium drums, whereby only the inner part of the drum on which the shoes operate are made of lamellar cast iron, namely the brake band. Additionally drums with built-in bearing kit and hub are added to this range.

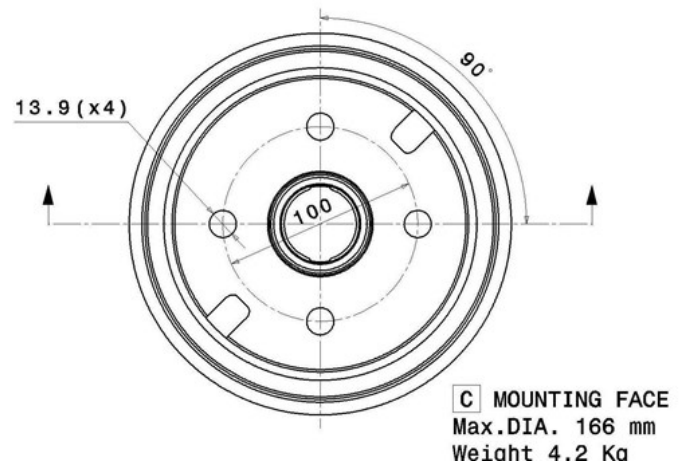
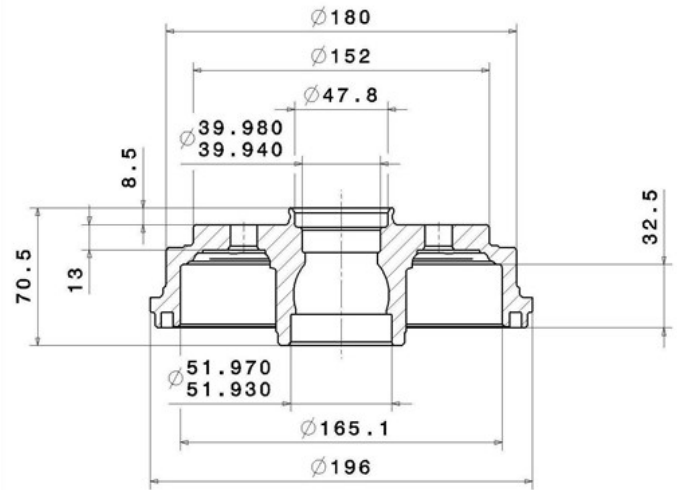


- ✓ OE-equivalent
- ✓ Brembo quality
- ✓ Safety
- ✓ Durability

Technical specifications



EAN code	Axle	Diameter
8020584017098	Rear	165 mm
Width	Height	Number of holes
32 mm	71	4
Centering	Max diameter	
39,9 mm	166 mm	



COMPATIBLE VEHICLES

COMPATIBLE OE PART NUMBERS

4240397205000	DAIHATSU
42431B2010	DAIHATSU
4240397205	PERODUA
4240397205000	PERODUA