



BRAKE PAD XTRA CERAMIC P44021NX

Xtra Ceramic brake pad P44021NX belongs to Brembo Cool Line

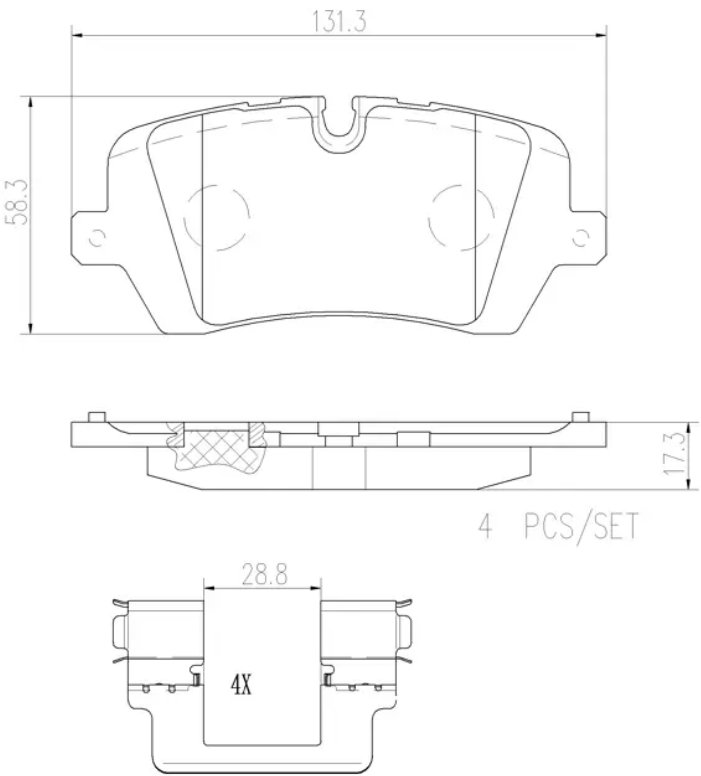
Brembo Xtra Ceramic brake pads have a specific compound which, beside being copper free, also contains less metal compared to Xtra pads. This feature make Xtra Ceramic more focused on comfort and cleaner rims, thanks to the ceramic friction material, while guaranteeing the top performance proper of the Xtra line. Xtra Ceramic range is fully ECE R90 homologated.

- ✓ OE-equivalent
- ✓ Brembo quality
- ✓ ECE-R90 certificate
- ✓ Safety
- ✓ Performance
- ✓ Dust reduction
- ✓ Comfort



Technical specifications

EAN code	Axle	Thickness
8020584131350	Rear	17 mm
Width	Height	Braking system
131 mm	58 mm	TRW
Wear indicator	WVA number	Accessories
Prepared for wear indicator	25720	With anti-squeal shim



COMPATIBLE VEHICLES

COMPATIBLE OE PART NUMBERS

LR036574	LAND ROVER
LR065492	LAND ROVER
LR068303	LAND ROVER
LR079910	LAND ROVER
LR079935	LAND ROVER
LR084118	LAND ROVER
LR106326	LAND ROVER
LR108260	LAND ROVER
LR123717	LAND ROVER
LR139173	LAND ROVER
LR146155	LAND ROVER
LR146247	LAND ROVER
LR147981	LAND ROVER
LR162042	LAND ROVER
LR162043	LAND ROVER
LR162046	LAND ROVER
LR162047	LAND ROVER
LR162048	LAND ROVER
LR164821	LAND ROVER