



# UPGRADE GT KIT

## 1B3.8015A\_

The 1B3.8015A\_ GT kit is synonymous with superior performance

Complete braking systems, comprising components derived from the world of motorsports and offering unrivalled levels of technology on the market. They feature aluminium radial-mounted fixed calipers, with opposing pistons. Depending on the type of system and the required performance level, the calipers can either be in two-parts, monoblock or even monoblock machined from solid billet metal. The uprated brake discs can be integral (one-piece) or composite, drilled or slotted.



- ✓ Brembo quality
- ✓ Safety
- ✓ Performance
- ✓ Comfort
- ✓ Sports driving
- ✓ Sparty look

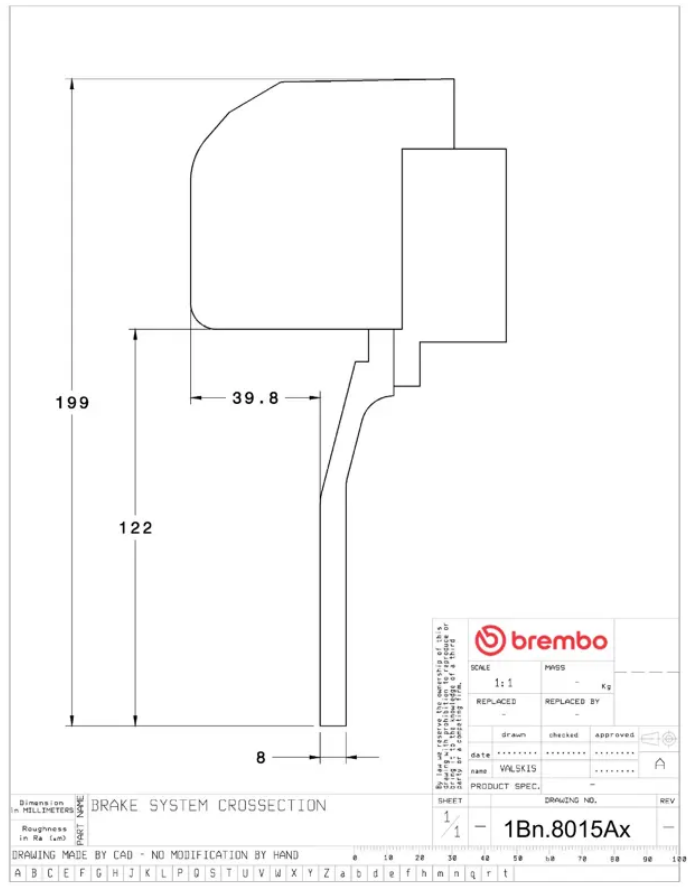
Available in 3 colours

- 1B3.8015A1
- 1B3.8015A2
- 1B3.8015A3

## Technical specifications



Axle	Diameter	Thickness (TH)
Front	<b>355 mm</b>	<b>32 mm</b>
Caliper pistons	Disc type	Caliper type
<b>4</b>	<b>2 pieces</b>	<b>2 pieces</b>



		SCALE	1:1	PKGS	-	KG
		REPLACED BY	-	REPLACED BY	-	-
<small>Il presente disegno è proprietà esclusiva di Brembo S.p.A. e non può essere copiato, ristampato, distribuito o utilizzato in alcun modo senza il permesso scritto della Brembo S.p.A.</small>	DATE	.....	DATE	.....	DATE	.....
	NAME	WALSKIS	NAME	.....	NAME	.....
PRODUCT SPEC.	-	PRODUCT SPEC.	-	PRODUCT SPEC.	-	PRODUCT SPEC.
SHEET	1	SHEET	1	SHEET	1	SHEET
DRAWING NO.	1Bn.8015Ax	DRAWING NO.	1Bn.8015Ax	DRAWING NO.	1Bn.8015Ax	DRAWING NO.
REV	-	REV	-	REV	-	REV

Dimension in MILLIMETERS  
 Roughness in Ra (µm)  
 DRAWING MADE BY CAD - NO MODIFICATION BY HAND  
 0 10 20 30 40 50 60 70 80 90 100  
 A B C E F G H J K L P Q R S T U V W X Y Z a b d e f h m n q r t

**COMPATIBLE VEHICLES**