



DRUM

14.3164.10

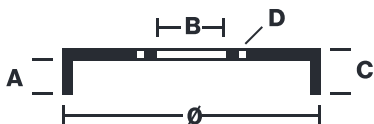
The 14.3164.10 drum is synonymous with reliability

Brembo has developed several design solutions for drum brakes which combine multiple materials to reduce the overall weight. The most popular range of lamellar graphite cast iron drums is supplemented by cast iron drums with a steel sprocket flange and aluminium drums, whereby only the inner part of the drum on which the shoes operate are made of lamellar cast iron, namely the brake band. Additionally drums with built-in bearing kit and hub are added to this range.

- ✓ OE-equivalent
- ✓ Brembo quality
- ✓ Safety
- ✓ Durability



Technical specifications



| | | |
|----------------------------------|-------------------------------|-----------------------------|
| EAN code 8020584316412 | Axle Rear | Diameter 230 mm |
| Width 46,5 mm | Height 59 | Number of holes 4 |
| Centering 58 mm | Max diameter 231 mm | |

| | |
|-------------------|-----------------------|
| | |
| 14.3164.10 | |
| AP | 55014 |
| BRECO | BT 3164 |
| DIMENSION | 230.1 X 46.5 mm |
| MAX DIA | 231 mm |
| BALANCING | GUARANTEED |
| MATERIAL | SUB-GROUP 1 |
| WEIGHT | 4 kg |
| | 90R 02D01202/59685 |

DATE : 03/12/2021 VERSION : 00

COMPATIBLE VEHICLES

COMPATIBLE OE PART NUMBERS

34211101741 BMW