



DRUM

14.5815.10

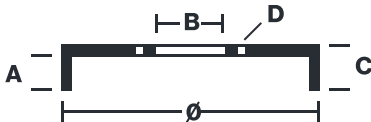
The 14.5815.10 drum is synonymous with reliability

Brembo has developed several design solutions for drum brakes which combine multiple materials to reduce the overall weight. The most popular range of lamellar graphite cast iron drums is supplemented by cast iron drums with a steel sprocket flange and aluminium drums, whereby only the inner part of the drum on which the shoes operate are made of lamellar cast iron, namely the brake band. Additionally drums with built-in bearing kit and hub are added to this range.

- ✓ OE-equivalent
- ✓ Brembo quality
- ✓ Safety
- ✓ Durability



Technical specifications



EAN code 8020584581513	Axle Rear	Diameter 200 mm
Width 55 mm	Height 65,5	Number of holes 4
Centering 55 mm	Max diameter 201 mm	

14.5815.10	
AP	55167
BRECO	BT 5815
DIMENSION	200.1 x 55 mm
MAX DIA	201 mm
BALANCING	GUARANTEED
MATERIAL	SUB-GROUP 1
WEIGHT	3.8 kg
	90R
	02D01202/59686

DATE : 10/11/2021 VERSION : 00

COMPATIBLE VEHICLES

COMPATIBLE OE PART NUMBERS

94852720	CHEVROLET
----------	-----------

4243102020	TOYOTA
------------	--------

4243112130	TOYOTA
------------	--------

4243112140	TOYOTA
------------	--------

4243112180	TOYOTA
------------	--------

4243120250	TOYOTA
------------	--------
