



DRUM

14.3284.10

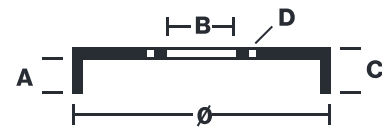
The 14.3284.10 drum is synonymous with reliability

Brembo has developed several design solutions for drum brakes which combine multiple materials to reduce the overall weight. The most popular range of lamellar graphite cast iron drums is supplemented by cast iron drums with a steel sprocket flange and aluminium drums, whereby only the inner part of the drum on which the shoes operate are made of lamellar cast iron, namely the brake band. Additionally drums with built-in bearing kit and hub are added to this range.

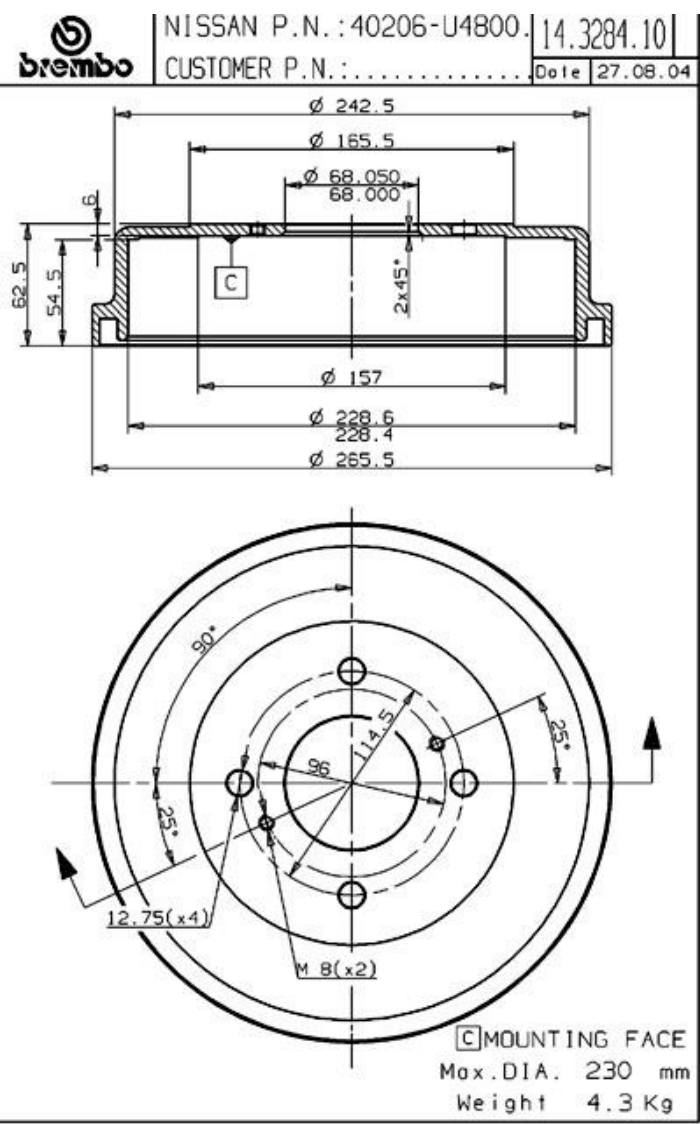
- ✓ OE-equivalent
- ✓ Brembo quality
- ✓ Safety
- ✓ Durability



Technical specifications



EAN code	Axle	Diameter
8020584328415	Rear	228 mm
Width	Height	Number of holes
54,5 mm	62,5	4
Centering	Max diameter	
68 mm	230 mm	



COMPATIBLE VEHICLES

COMPATIBLE OE PART NUMBERS

4020621000	NISSAN
4020621001	NISSAN
40206U4800	NISSAN
432061E410	NISSAN
432064M700	NISSAN
432069	NISSAN