



UPGRADE GT KIT

1M1.9028A_


The 1M1.9028A_ GT kit is synonymous with superior performance

Complete braking systems, comprising components derived from the world of motorsports and offering unrivalled levels of technology on the market. They feature aluminium radial-mounted fixed calipers, with opposing pistons. Depending on the type of system and the required performance level, the calipers can either be in two-parts, monoblock or even monoblock machined from solid billet metal. The uprated brake discs can be integral (one-piece) or composite, drilled or slotted.



- ✓ Brembo quality
- ✓ Safety
- ✓ Performance
- ✓ Comfort
- ✓ Sports driving
- ✓ Sporty look

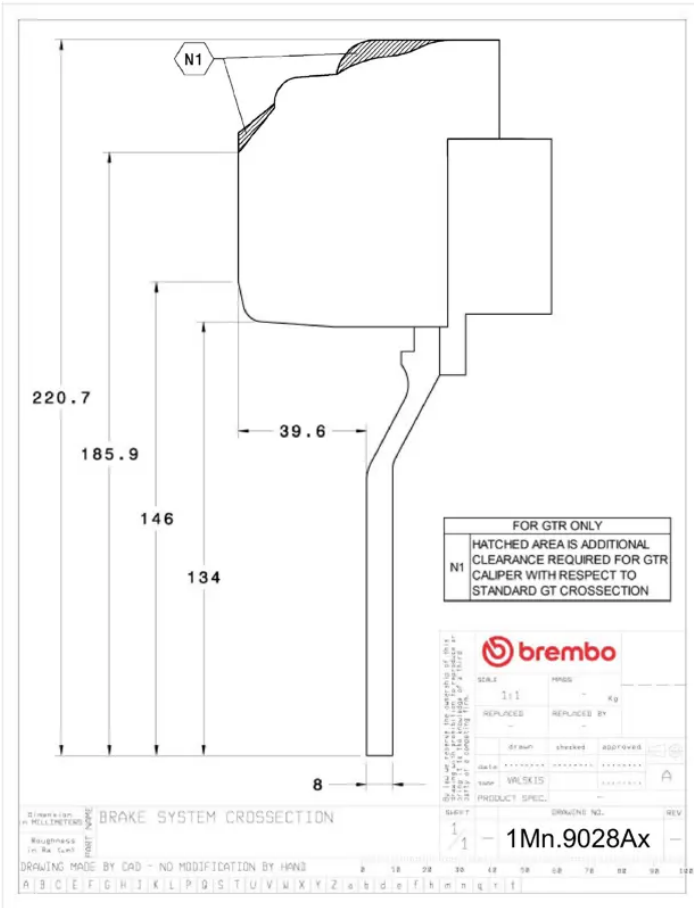
Available in 4 colours

 1M1.9028A1  1M1.9028A2  1M1.9028A3  1M1.9028A5

Technical specifications



Axle	Diameter	Thickness (TH)
Front	380 mm	32 mm
Caliper pistons	Disc type	Caliper type
6	2 pieces	Monoblock



COMPATIBLE VEHICLES